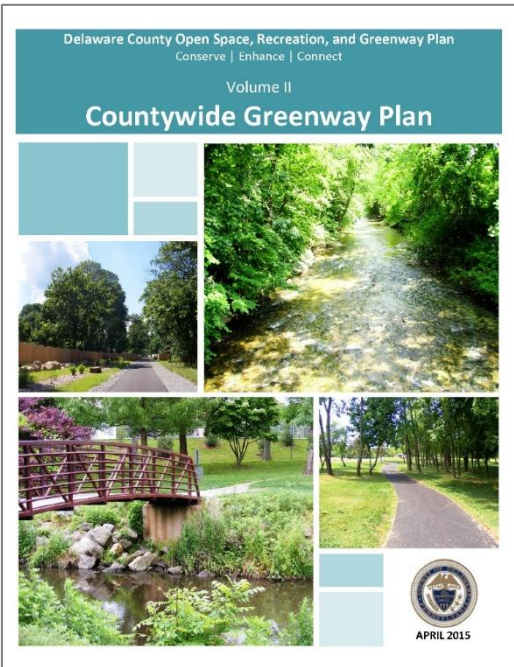




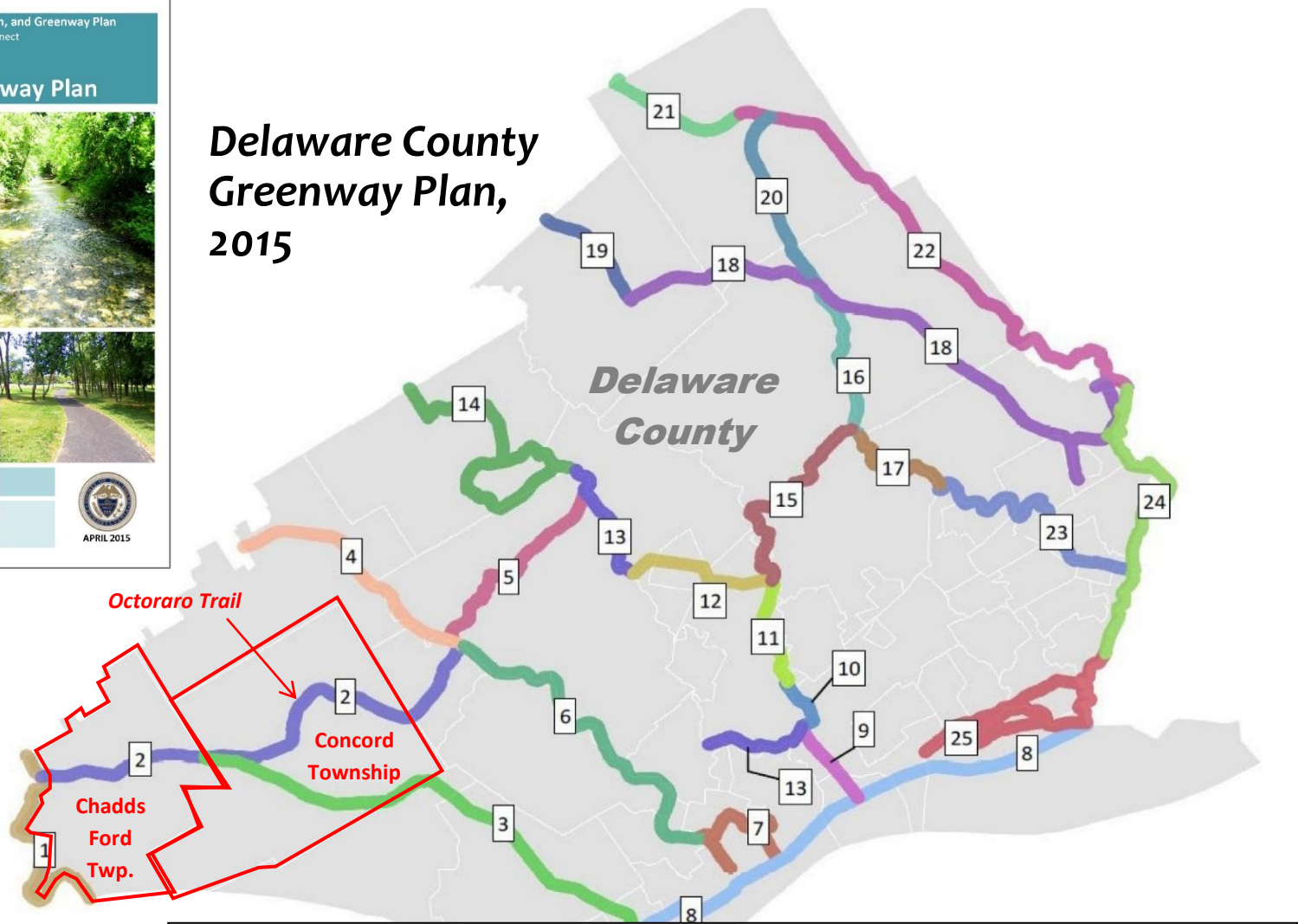
Octoraro Trail

February 8, 2025





Delaware County Greenway Plan, 2015

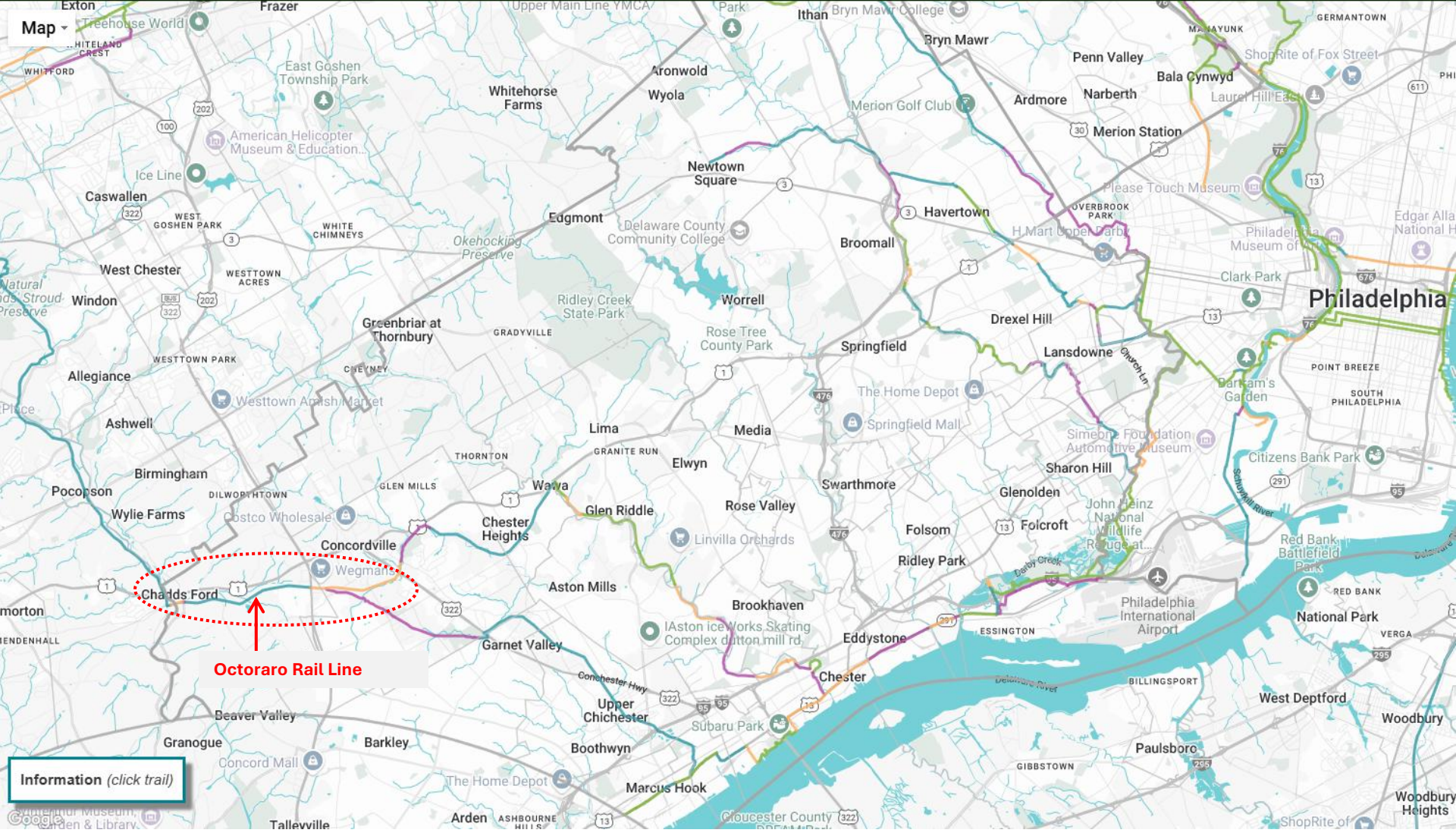


Octoraro Trail

Concord Township

Chadds Ford Twp.

- | | | |
|---|--|--|
| 1 - Brandywine Creek Greenway | 10 - Blue Route Bikeway - Leiper to Kinder Connector | 19 - Route 252 Bicycle Route |
| 2 - Octoraro Rail Trail | 11 - Blue Route Bikeway - Leiper-Smedley Trail | 20 - Blue Route Bikeway - Ithan-Darby Creek Valley |
| 3 - PECO Right-of-Way Trail | 12 - Media-Smedley Connector Trail | 21 - Radnor Trail |
| 4 - Chester Creek Trail - North Extension | 13 - Ridley Creek Greenway (North & South Sections) | 22 - Forge to Refuge Trail |
| 5 - Rocky Run Trail | 14 - Ridley Creek State Park Trails | 23 - Darby Creek Stream Valley Park Trail |
| 6 - Chester Creek Trail | 15 - Blue Route Bikeway - Smedley to Darby Creek | 24 - Cobbs Creek Trail |
| 7 - Chester Creek Trail - East Coast Greenway (ECG) Connector | 16 - Darby Creek Trail - Haverford Township | 25 - Heinz Refuge Trails |
| 8 - East Coast Greenway | 17 - Darby Creek Trail - Drexel Hill Connector | |
| 9 - Blue Route Bikeway - East Coast Greenway (ECG) Connector | 18 - Newtown Square Branch Rail Trail | |



Octoraro Rail Line

Information (click trail)

Recreation & Open Space Plan Update

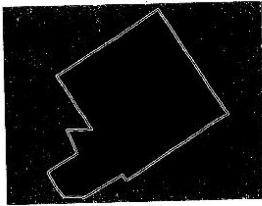
Concord Township
Delaware County, Pennsylvania

THOMAS J. COMITTA
Thomas Comitta Associates, Inc.
Town Planners & Landscape Architects
25 West Chester, PA 19380

March 18, 2007; Revised June 6, 2007
Adopted: January 7, 2009

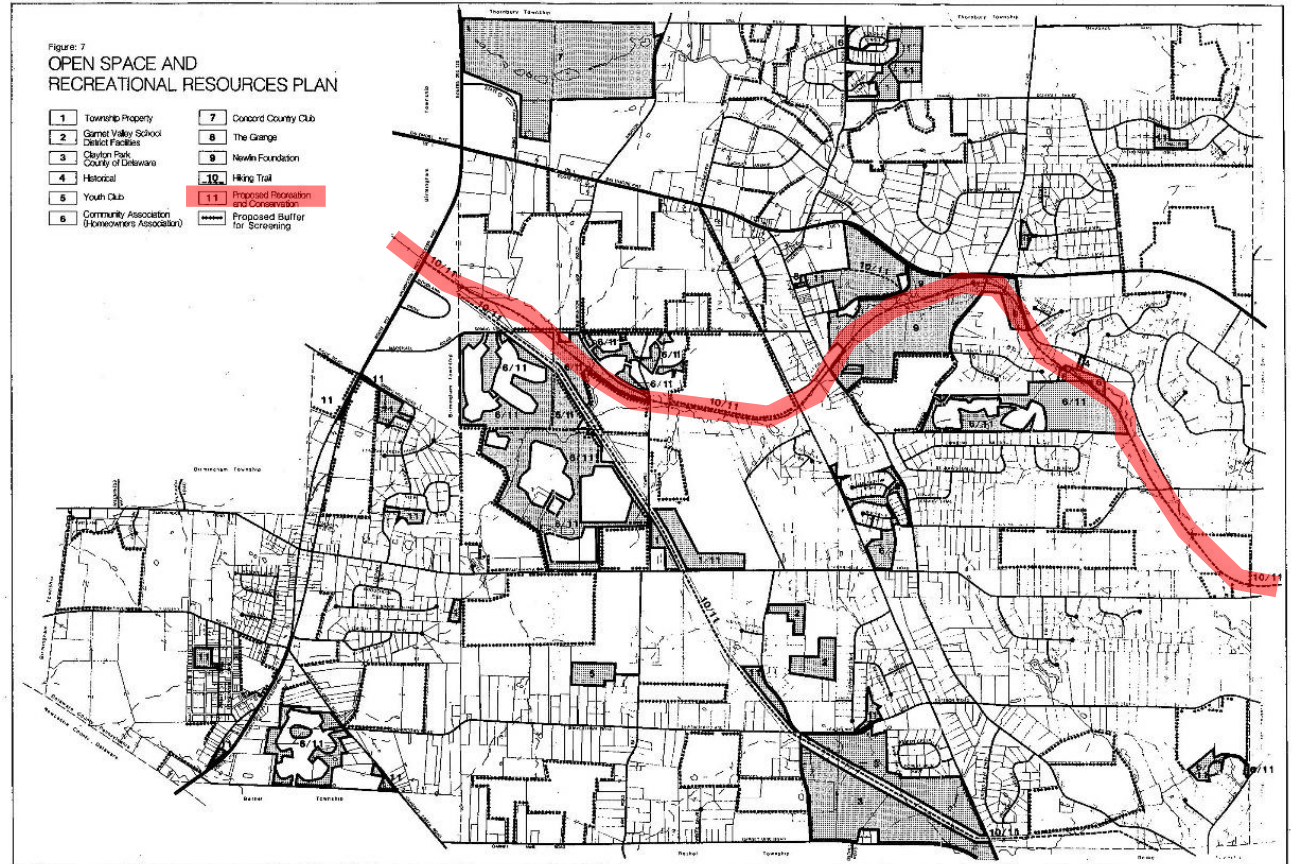
COMPREHENSIVE PLAN ADDENDUM

CONCORD TOWNSHIP
Delaware County, Pennsylvania



Adopted: December 7, 2004

THOMAS J. COMITTA
Thomas Comitta Associates, Inc.
Town Planners & Landscape Architects
West Chester, Pennsylvania



Comprehensive Plan

Concord Township
Delaware County, Pennsylvania



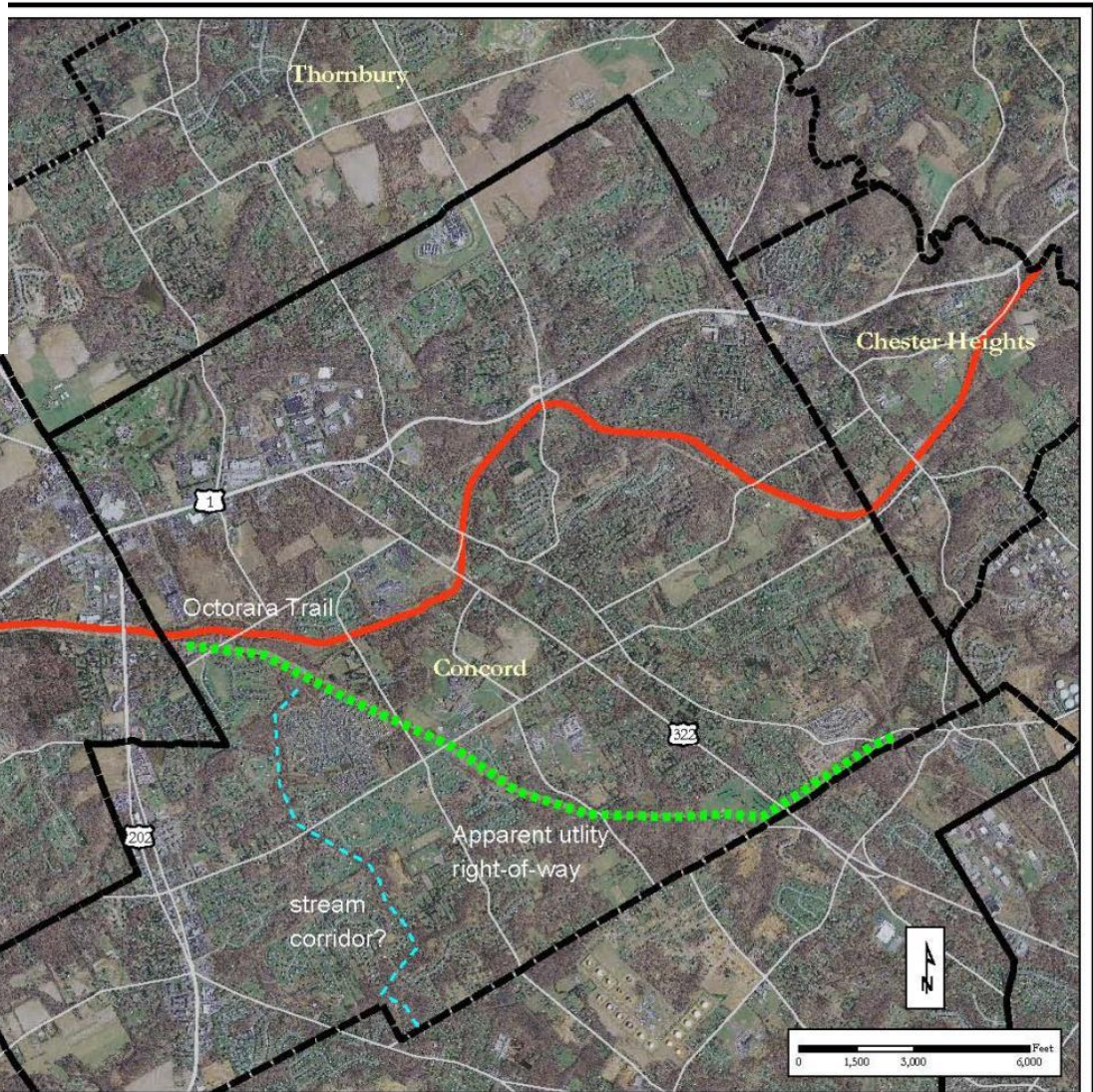
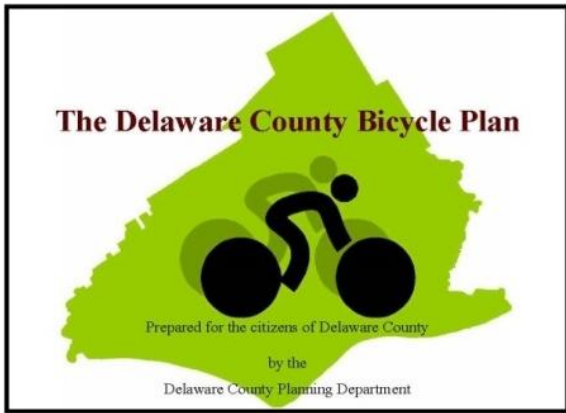
Scale in Feet
Scale in Miles
Date: February 2, 1988



Thomas J. Comitta
Planning Consultant and Landscape Architect
West Chester, Pennsylvania 19382
E-2
This base map was obtained from the Delaware Base Map depicting the county districts of Delaware County. It was adopted in 1988 under Act 1988-001 and 1989 Year of the Delaware County for Assessor's Office and General Revenue.

Concord Township Comp Plan, 2004

Delaware County Bicycle Plan, 2005



Map E - 4

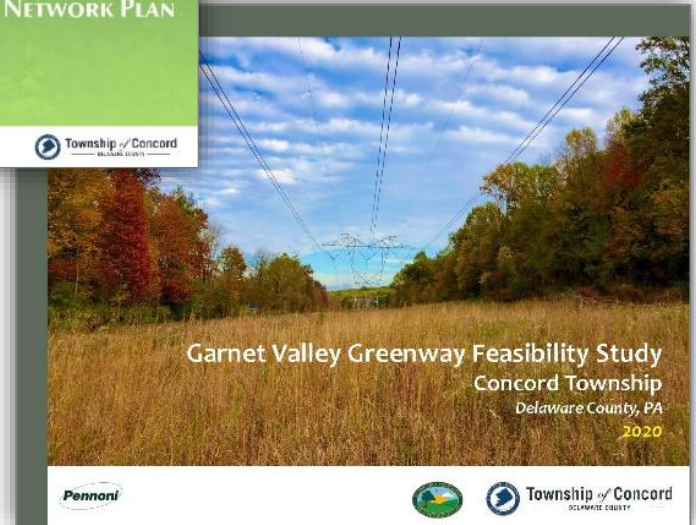
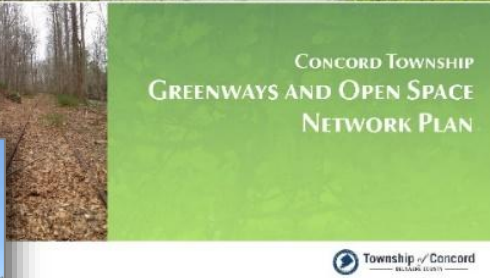
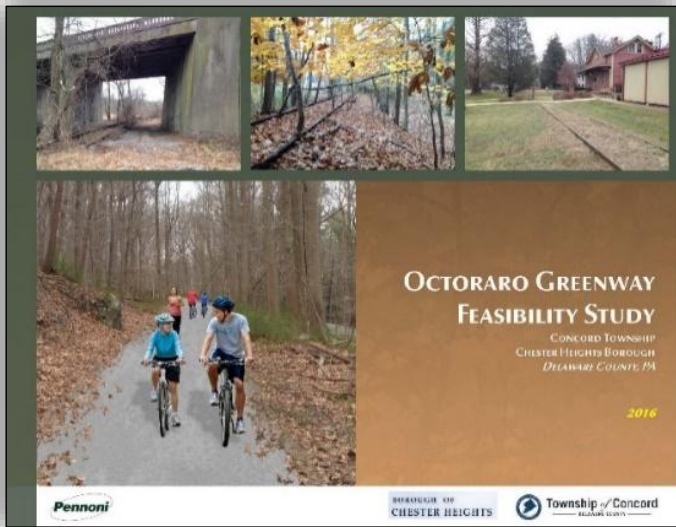
Octorara Branch Right-of-way

Page E - 9

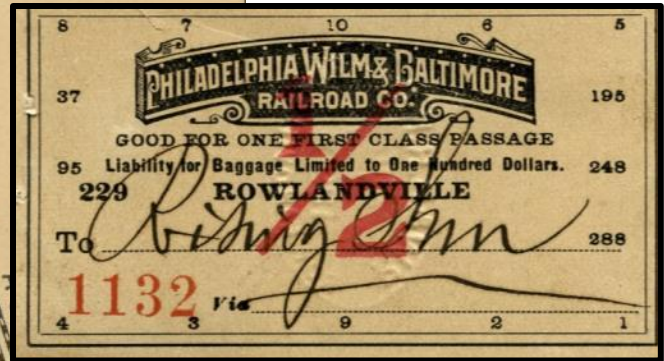
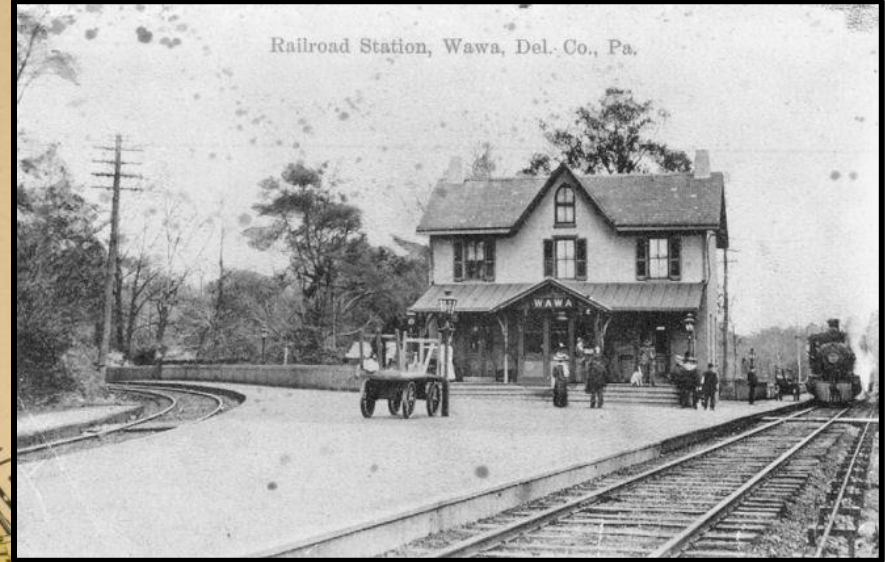
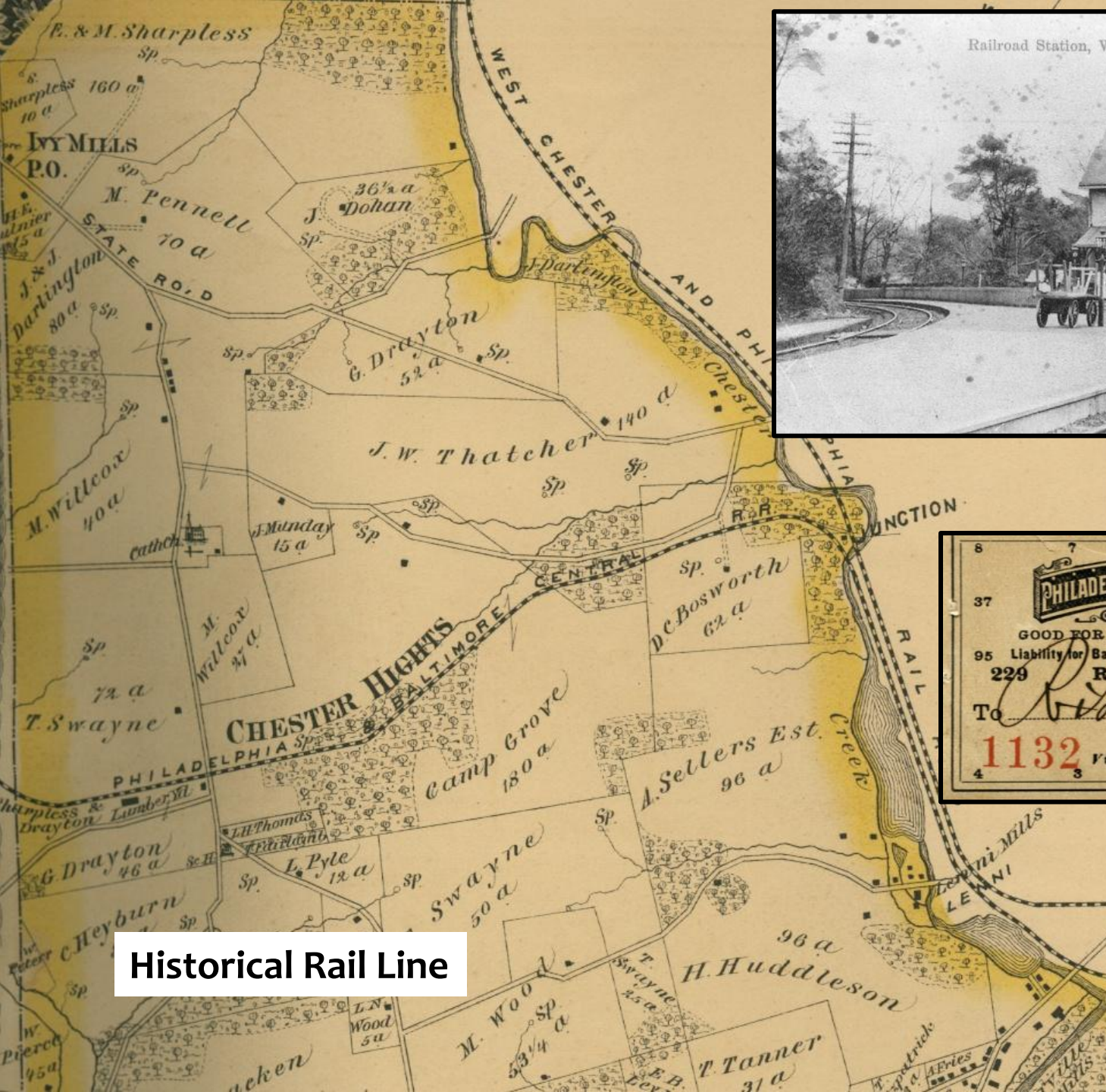
NOTES:
 1. USGS - County and Municipal Boundaries
 2. DVRPC - Orthophotography
 3. Delaware County Planning Department - Octorara Trail

Disclaimer
 The map is for study and
 purposes only. The reliability
 of the map depends on the
 accuracy of its underlying
 data sources, which have not
 been verified.

Prepared by
 Delaware County
 Planning Department
 March 2005



Lots of Plans!



Historical Rail Line

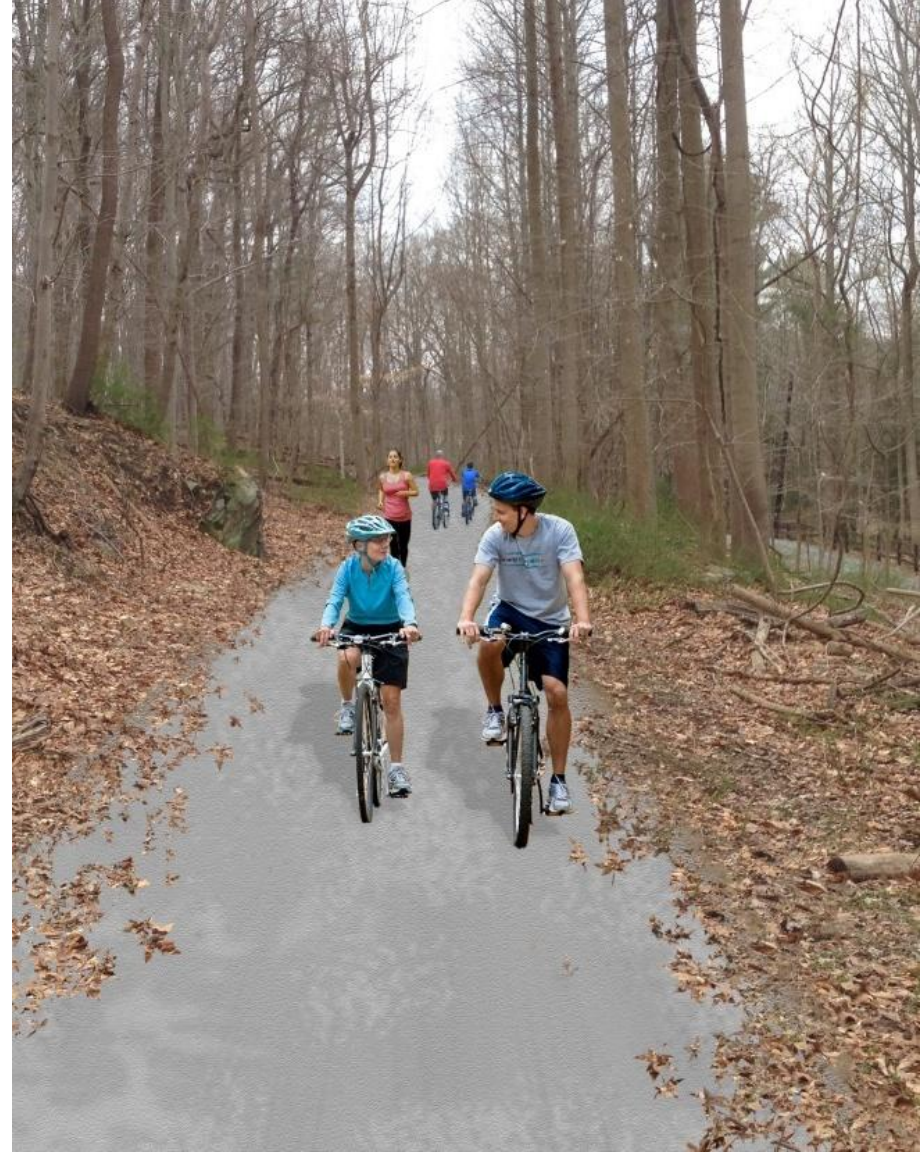


Historical Rail Line



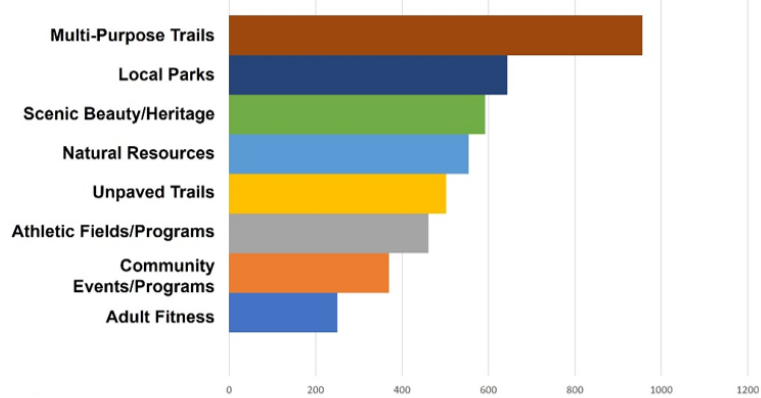
Historical Rail Line



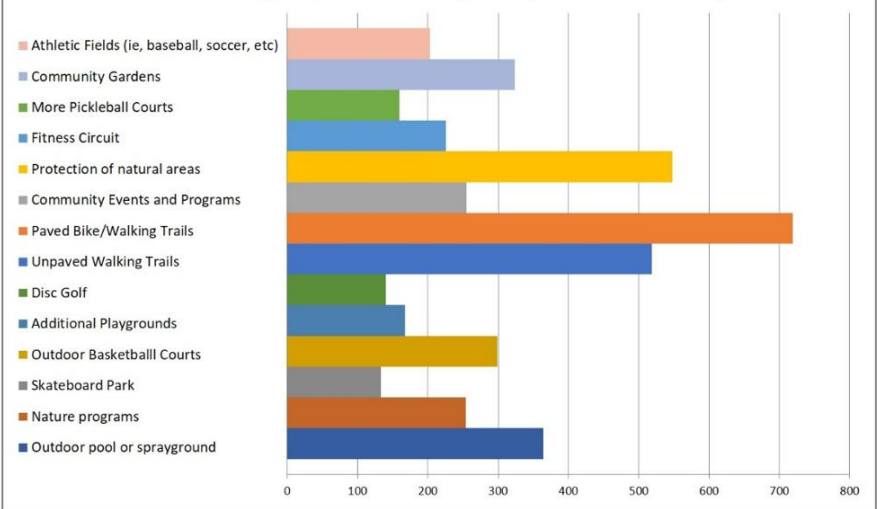


Public Opinion Survey

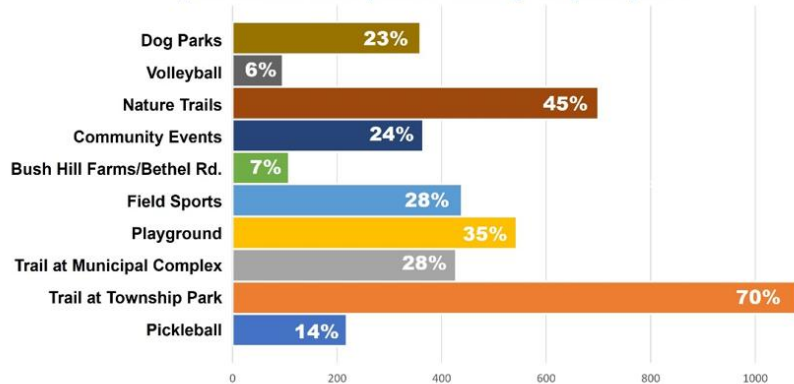
What do you think is most important?



In the future, what types of recreation and open space features should the Township strive to add or improve? (choose 5 maximum)






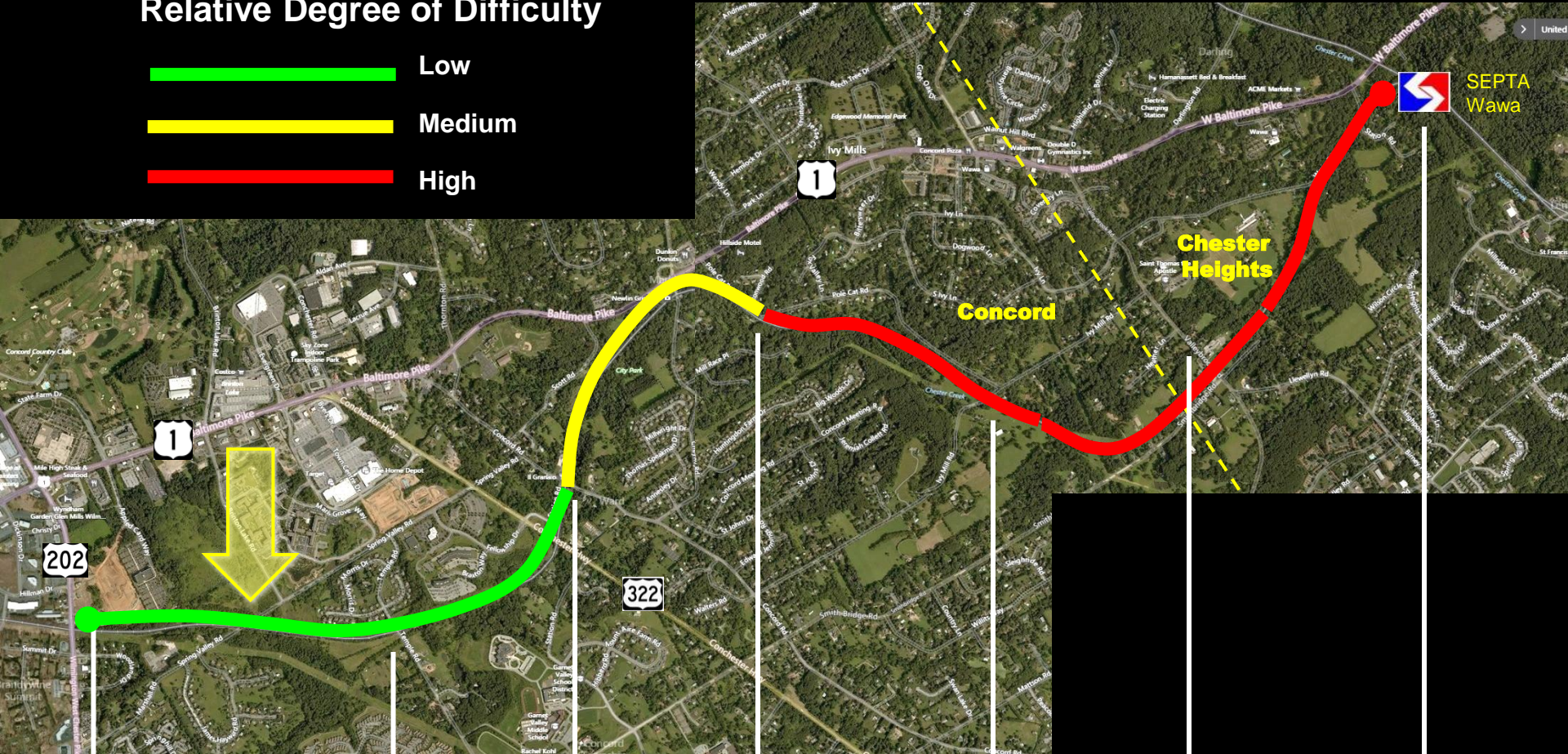
What parks, recreation and open space places and activities did you visit or take part in during the past year?



Octoraro Trail, Concord Twp.

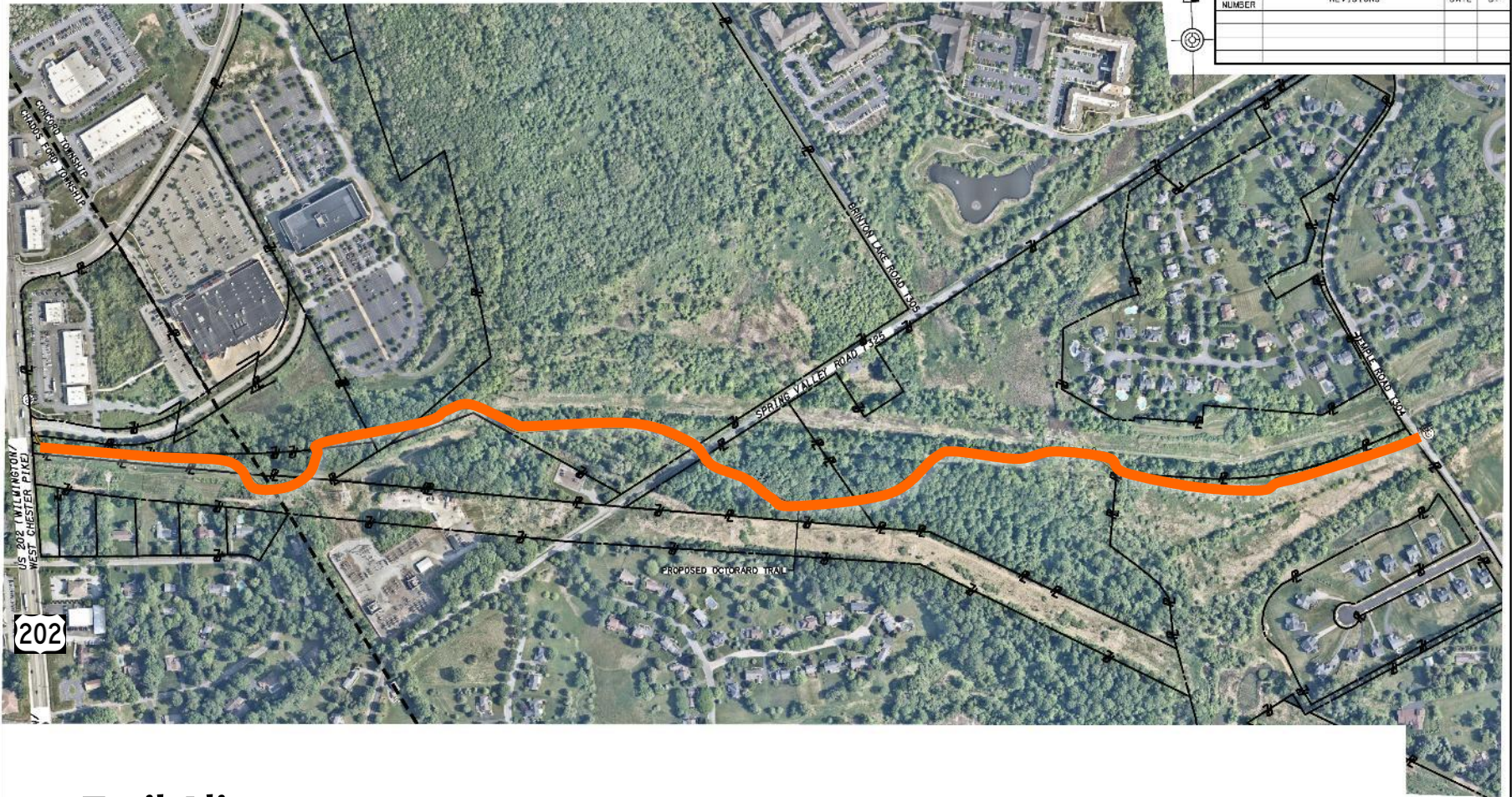
Relative Degree of Difficulty

-  Low
-  Medium
-  High

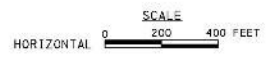


<p>Section 1a</p>	<p>Section 1b</p>	<p>Section 2</p>	<p>Section 3</p>	<p>Section 4</p>	<p>Section 5</p>
<p>Route 202 to Temple Road</p>	<p>Temple Rd. to Concord Rd.</p>	<p>Newlin Grist Mill</p>	<p>Pole Cat Road</p>	<p>Ivy Mills Road</p>	<p>Valleybrook Rd. to Wawa Station</p>

DISTRICT	COUNTY	ROUTE	SECTION	SHEET
6-3	DELAWARE	0000	010	1 OF 1
CONCORD TOWNSHIP				
REVISION NUMBER	REVISIONS	DATE	BY	

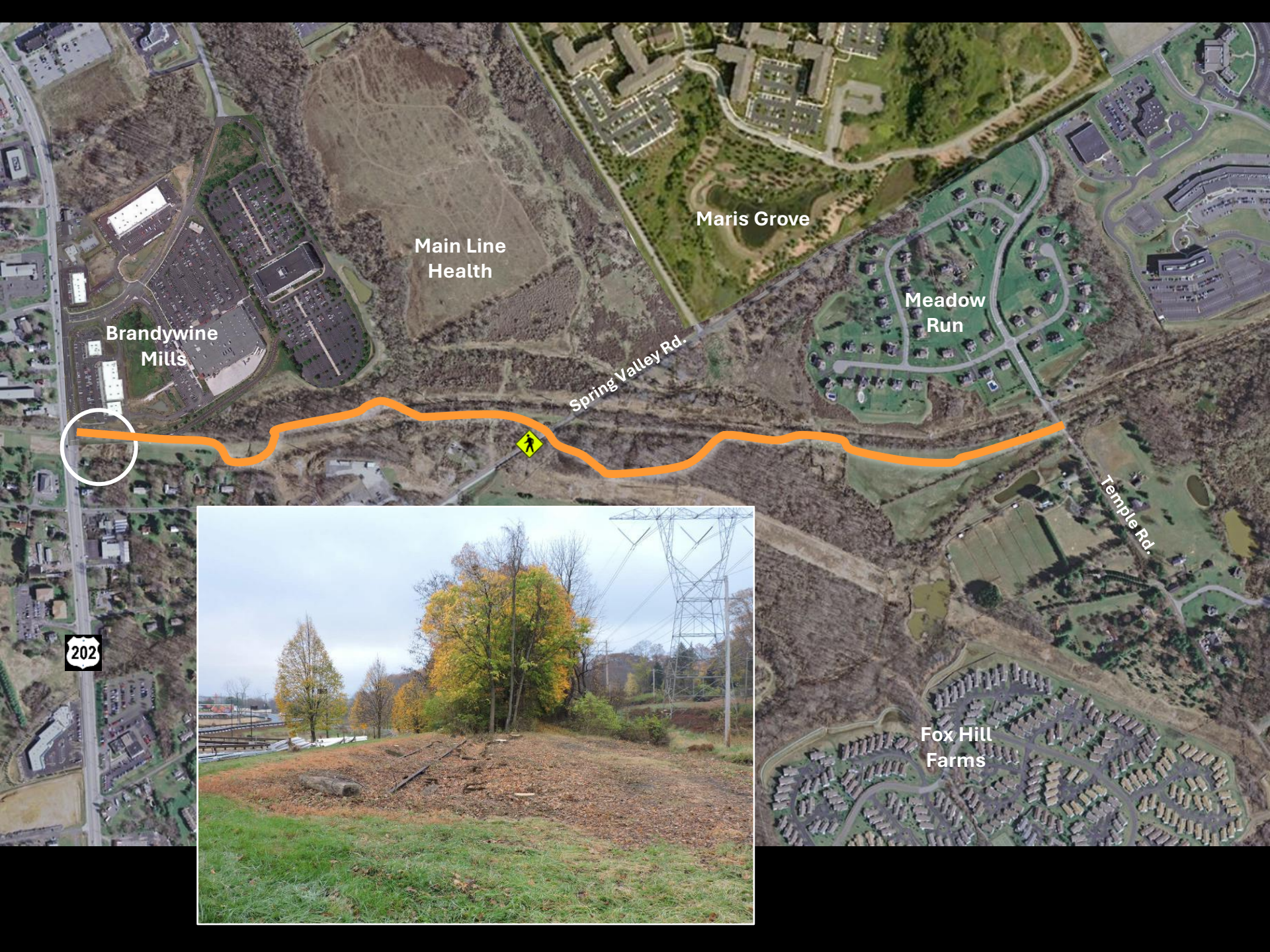


Trail Alignment



EX-11 PROPERTY EXHIBIT

CONCORD TOWNSHIP ENGINEERING & SURVEYING, INC.
 1000 MARKET STREET, SUITE 200, WILMINGTON, DE 19801
 TEL: 302-476-1111 FAX: 302-476-1112
 WWW.CONCORDTOWNSHIPENGINEERING.COM



202

Brandywine Mills

Main Line Health

Maris Grove

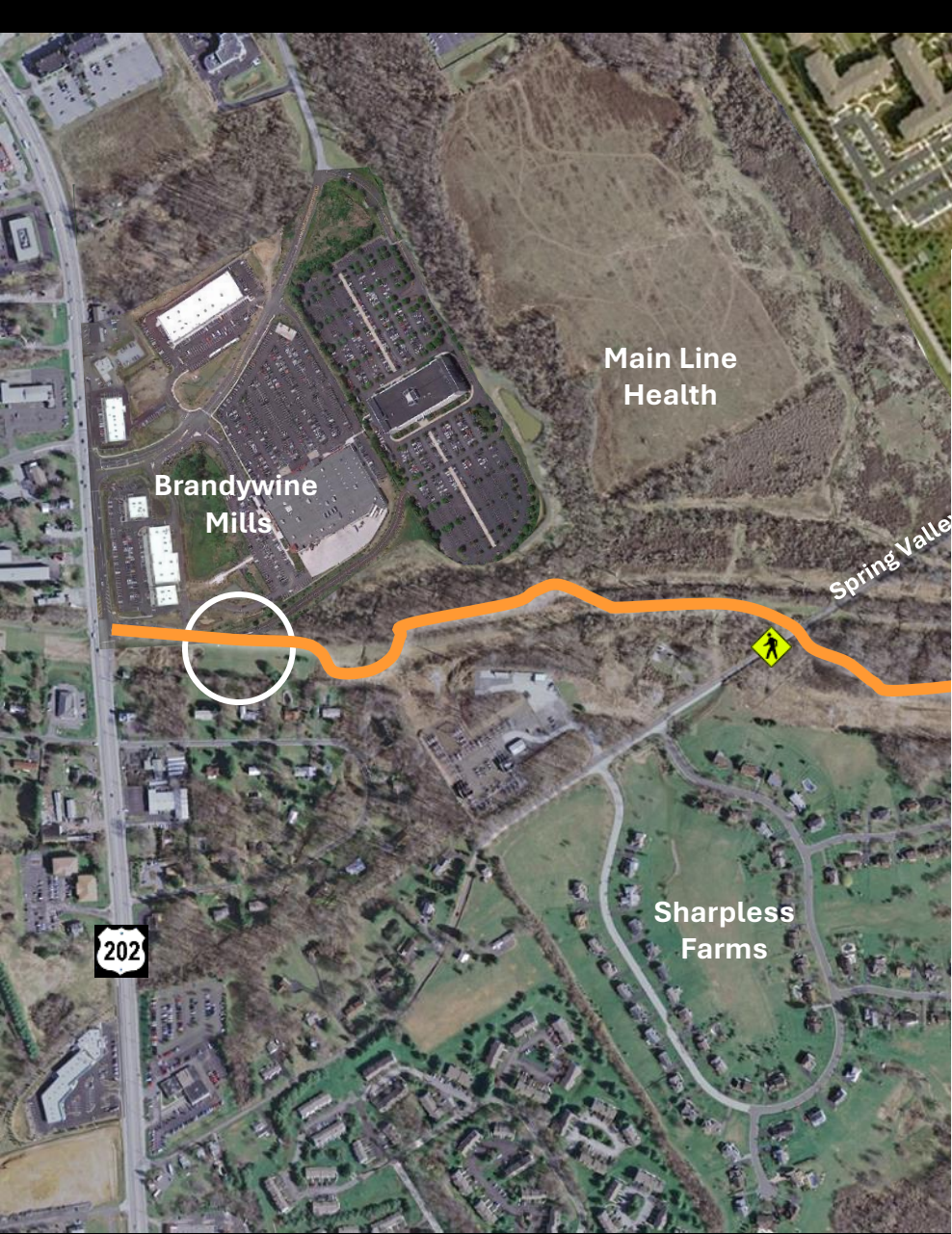
Meadow Run

Spring Valley Rd.

Temple Rd.

Fox Hill Farms



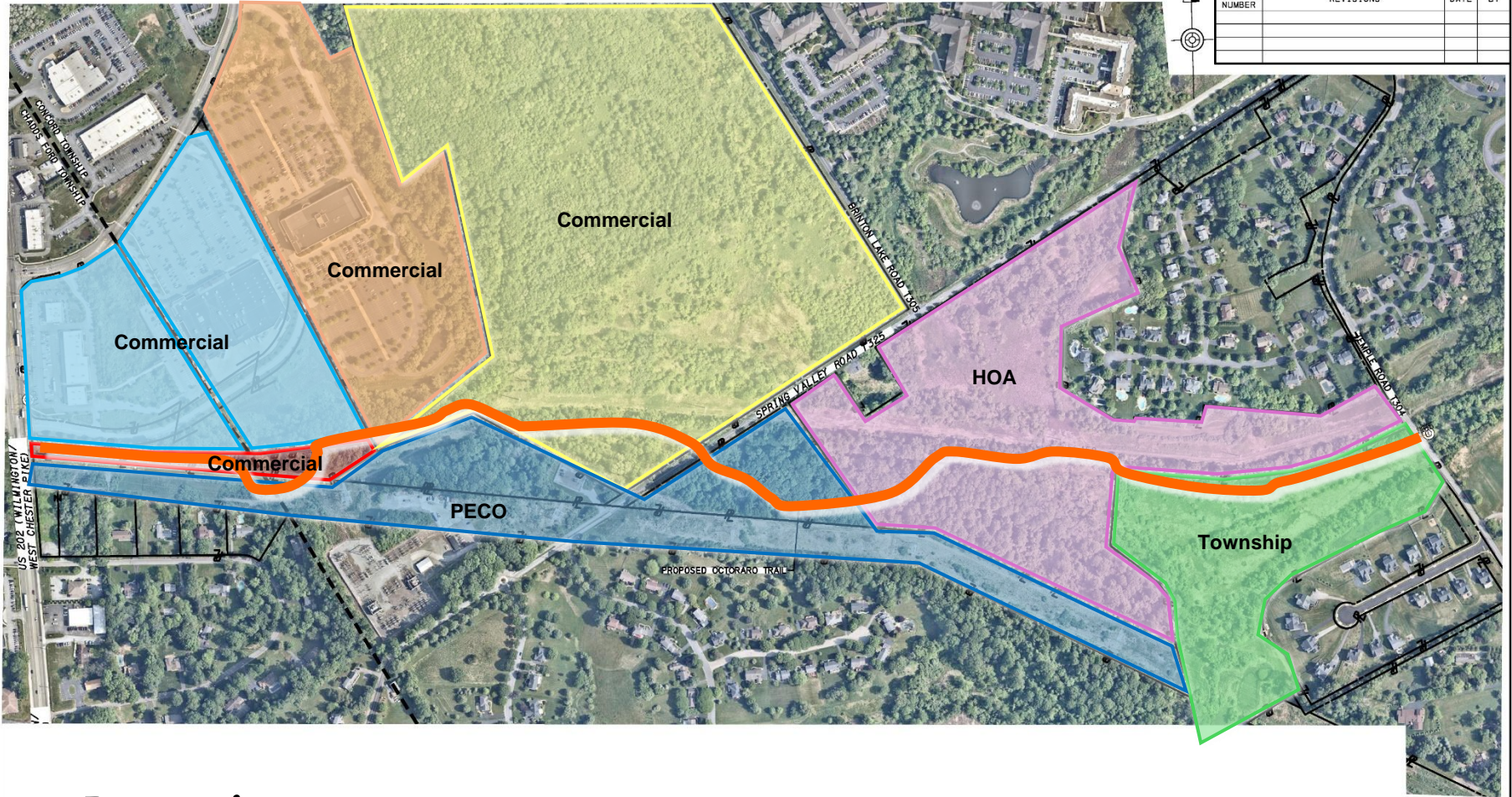






Meadow Run

DISTRICT	COUNTY	ROUTE	SECTION	SHEET
6-0	DELAWARE	0000	OTC	1 OF 1
CONCORD TOWNSHIP				
REVISION NUMBER	REVISIONS	DATE	BY	

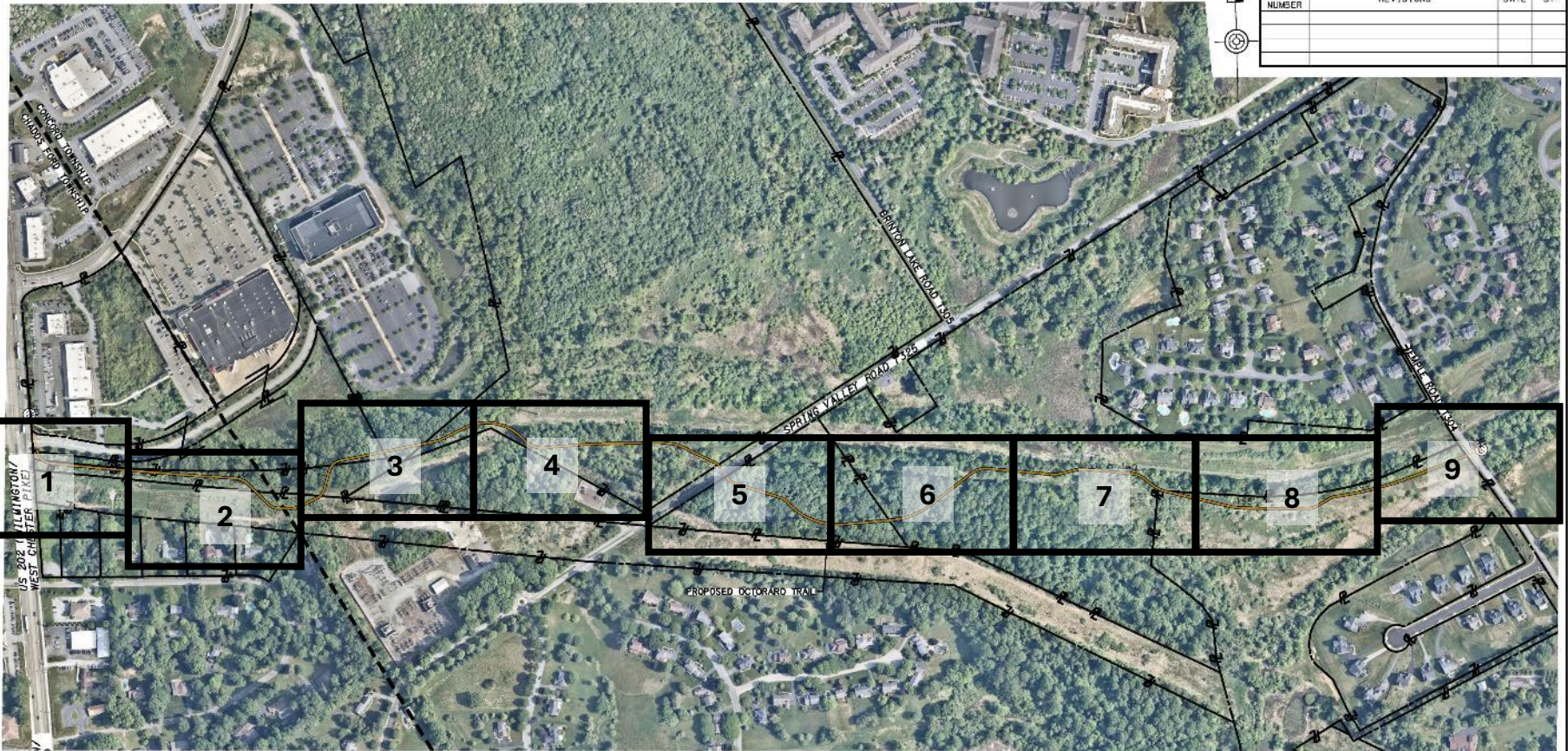


Properties

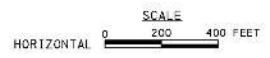


CONCORD TOWNSHIP ENGINEERING & SURVEYING, INC.
 1000 WILMINGTON PIKE, SUITE 200
 WILMINGTON, DE 19804
 TEL: 302-439-7272 FAX: 302-439-7273
 WWW.CONCORDTOWNSHIPENGINEERING.COM

DISTRICT	COUNTY	ROUTE	SECTION	SHEET
6-3	DELAWARE	0000	010	1 OF 1
CONCORD TOWNSHIP				
REVISION NUMBER	REVISIONS	DATE	BY	



Technical Obstacles



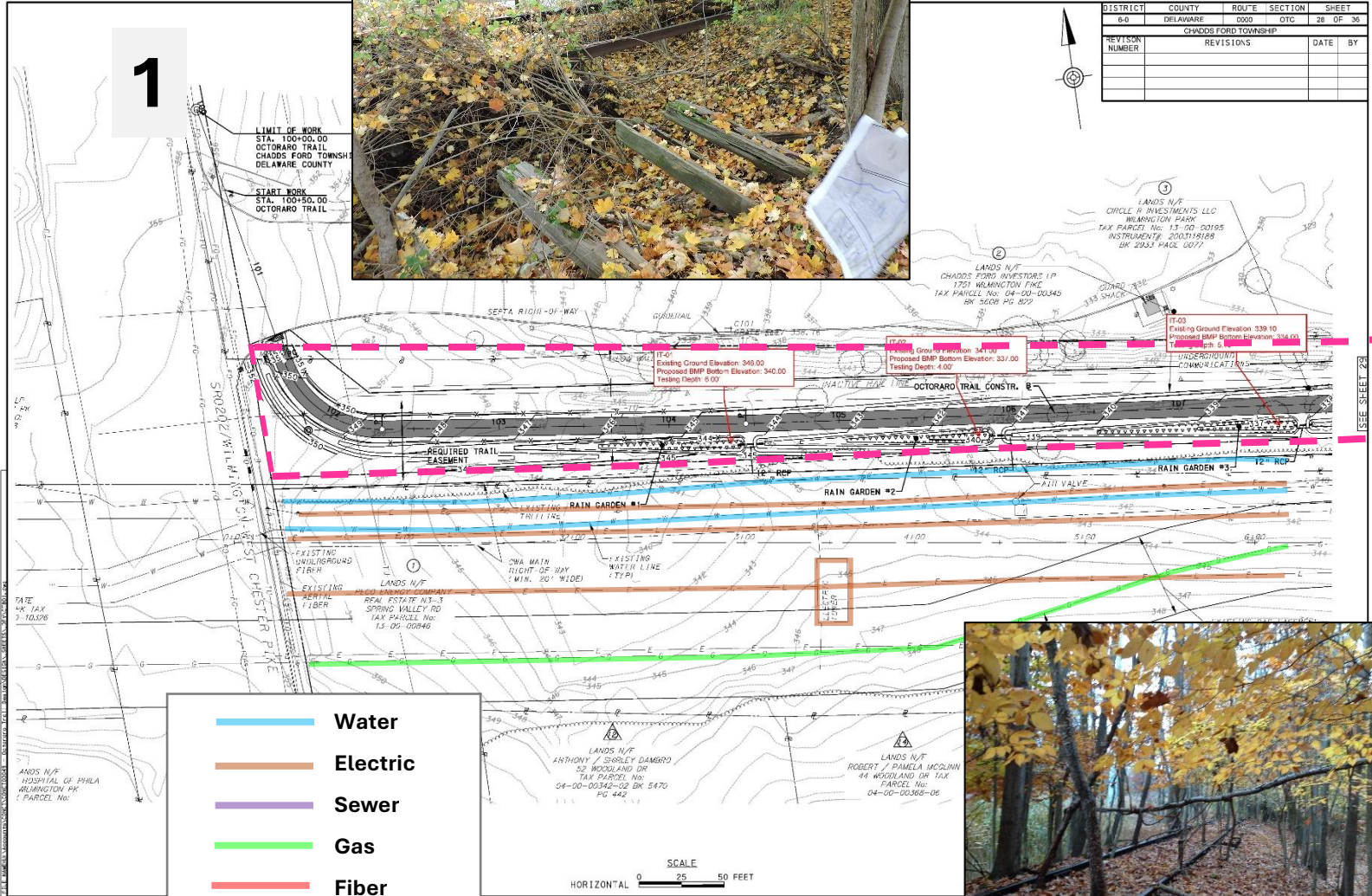
EX-11 PROPERTY EXHIBIT

CONCORD TOWNSHIP ENGINEERS
 1000 MARKET STREET, SUITE 200
 WILMINGTON, DE 19801
 TEL: 302-439-1234
 FAX: 302-439-1235
 WWW.CONCORDTOWNSHIPENGINEERS.COM

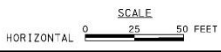
1



DISTRICT	COUNTY	ROUTE	SECTION	SHEET
6-0	DELAWARE	0000	OTC	26 OF 30
CHADDS FORD TOWNSHIP				
REVISION NUMBER	REVISIONS	DATE	BY	



- Water
- Electric
- Sewer
- Gas
- Fiber
- stream
- - - Septa r.o.w.



CONSULT ASSOCIATES, INC.
 200 N. MARKET STREET, SUITE 200
 WILMINGTON, DE 19801
 TEL: 302.426.1234
 FAX: 302.426.1235
 WWW.CONSULTASSOCIATES.COM

LANDS N/F
 HOSPITAL OF PHILA
 WILMINGTON PK
 PARCEL NO.

LANDS N/F
 REAL ESTATE N3-3
 SPRING VALLEY RD
 TAX PARCELS No.
 13-05-00846

LANDS N/F
 ANTHONY J SHUREY GAMBRO
 52 WOODLAND DR
 TAX PARCEL No.
 04-00-00342-02 BK 3470
 PG 442

LANDS N/F
 ROBERT J PAMELA MCCLINN
 44 WOODLAND DR TAX
 PARCEL No.
 04-00-00368-06

LANDS N/F
 CHADDS FORD INVESTORS LP
 1701 WILMINGTON PIKE
 TAX PARCEL No. 04-00-00345
 BK 3509 PG 659

LANDS N/F
 CIRCLE K INVESTMENTS LLC
 WILMINGTON PARK
 TAX PARCEL No. 13-00-00195
 INSTRUMENT# 200318188
 BK 3063 PAGE 0677

IT-03
 Existing Ground Elevation: 339.10
 Proposed BMP Bottom Elevation: 334.00
 Testing Depth: 6.00'

IT-02
 Existing Ground Elevation: 341.00
 Proposed BMP Bottom Elevation: 337.00
 Testing Depth: 4.00'

LANDS N/F
 REAL ESTATE N3-3
 SPRING VALLEY RD
 TAX PARCELS No.
 13-05-00846

LANDS N/F
 ANTHONY J SHUREY GAMBRO
 52 WOODLAND DR
 TAX PARCEL No.
 04-00-00342-02 BK 3470
 PG 442

LANDS N/F
 ROBERT J PAMELA MCCLINN
 44 WOODLAND DR TAX
 PARCEL No.
 04-00-00368-06

LANDS N/F
 HOSPITAL OF PHILA
 WILMINGTON PK
 PARCEL NO.

LANDS N/F
 CHADDS FORD INVESTORS LP
 1701 WILMINGTON PIKE
 TAX PARCEL No. 04-00-00345
 BK 3509 PG 659

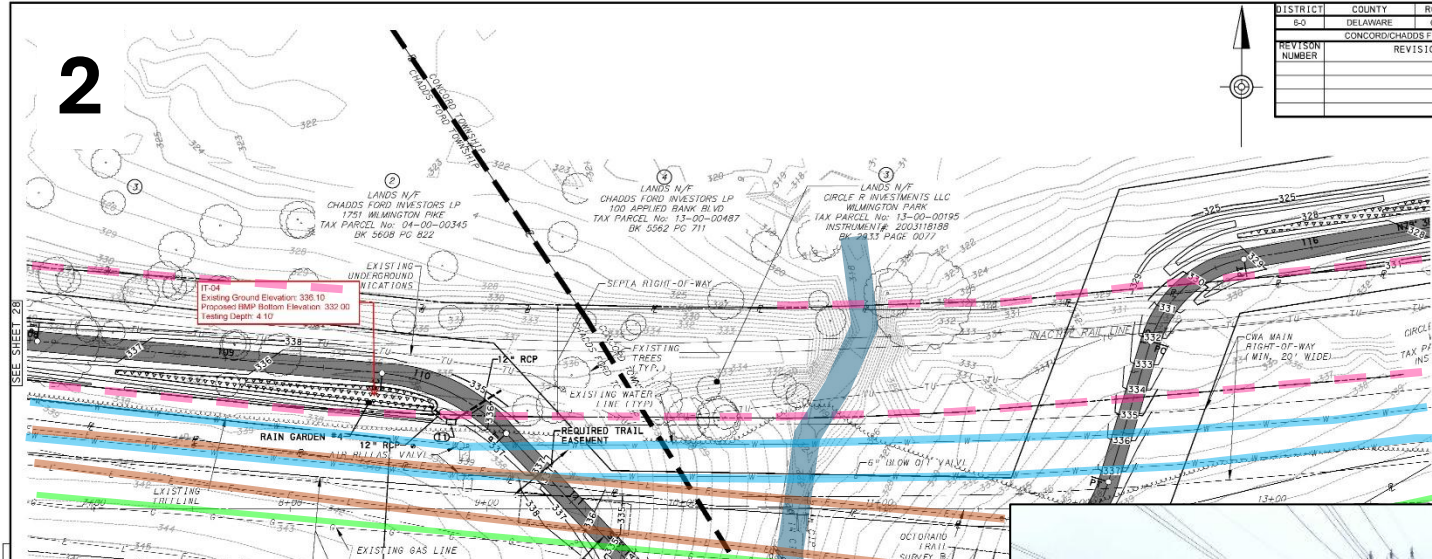
LANDS N/F
 CIRCLE K INVESTMENTS LLC
 WILMINGTON PARK
 TAX PARCEL No. 13-00-00195
 INSTRUMENT# 200318188
 BK 3063 PAGE 0677








SEE SHEET 25

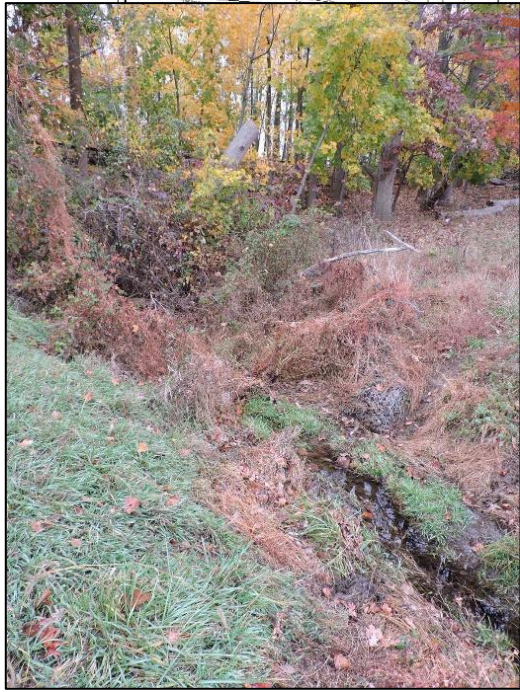
2

DISTRICT	COUNTY	ROUTE	SECTION	SHEET
6-0	DELAWARE	000	07C	29 OF 30
CONZOR/CHADDS FORD TOWNSHIPS				
REVISION NUMBER	REVISIONS	DATE	BY	

SEE SHEET 30

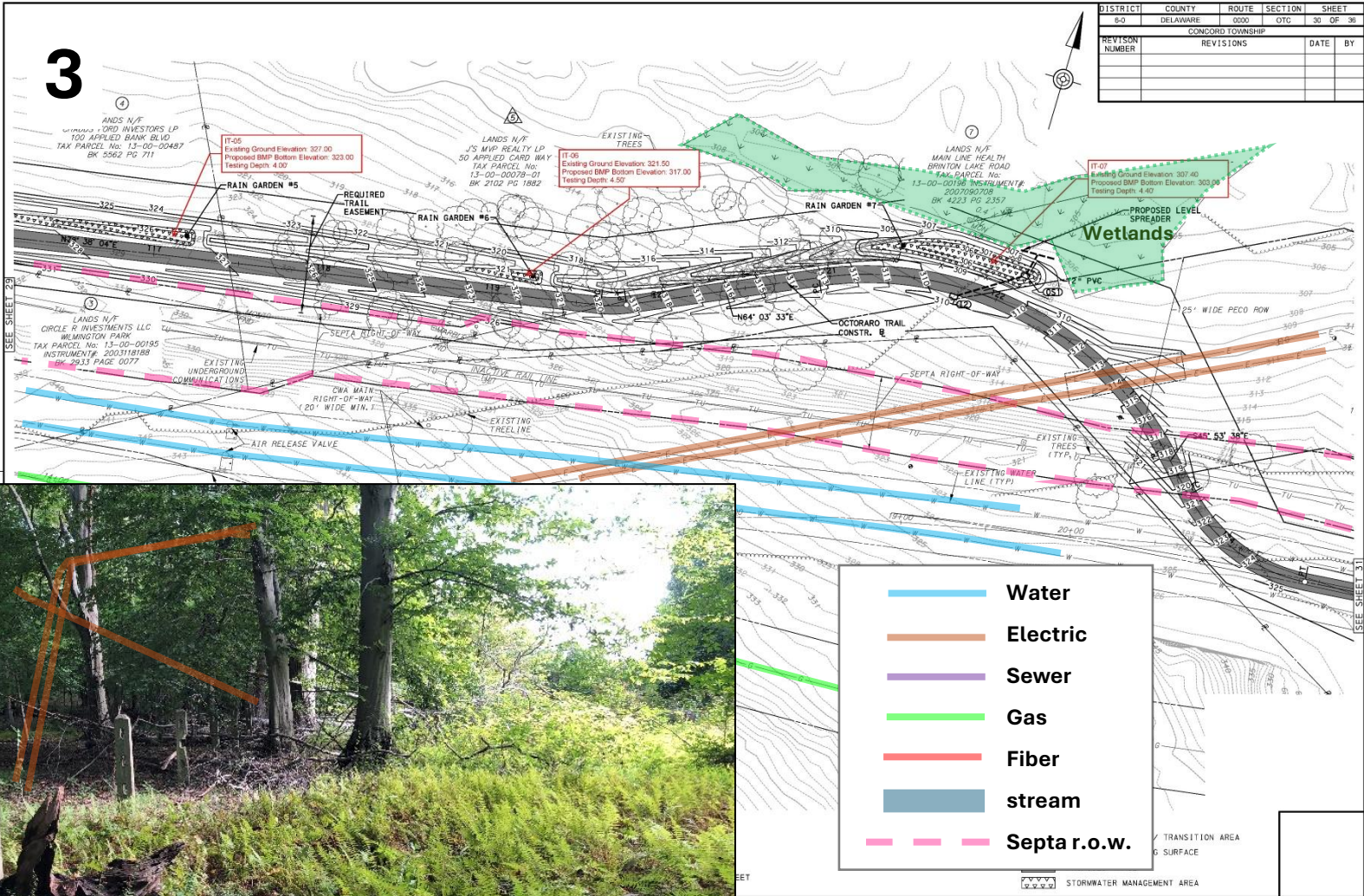


	Water
	Electric
	Sewer
	Gas
	Fiber
	stream
	Septa r.o.w.

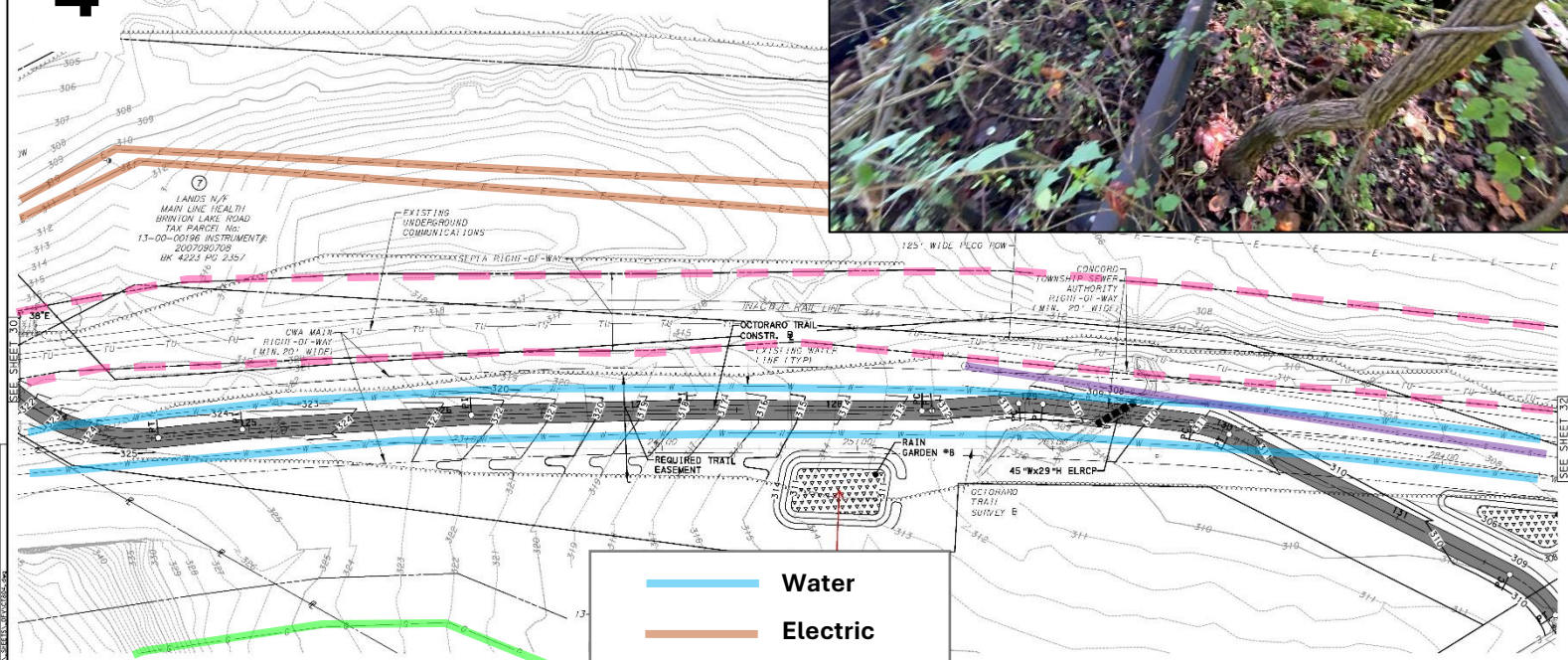


3

DISTRICT	COUNTY	ROUTE	SECTION	SHEET
6-0	DELAWARE	0000	01C	30 OF 36
CONCORD TOWNSHIP				
REVISION NUMBER	REVISIONS	DATE	BY	



4



	Water
	Electric
	Sewer
	Gas
	Fiber
	stream
	Septa r.o.w.



LEGEND

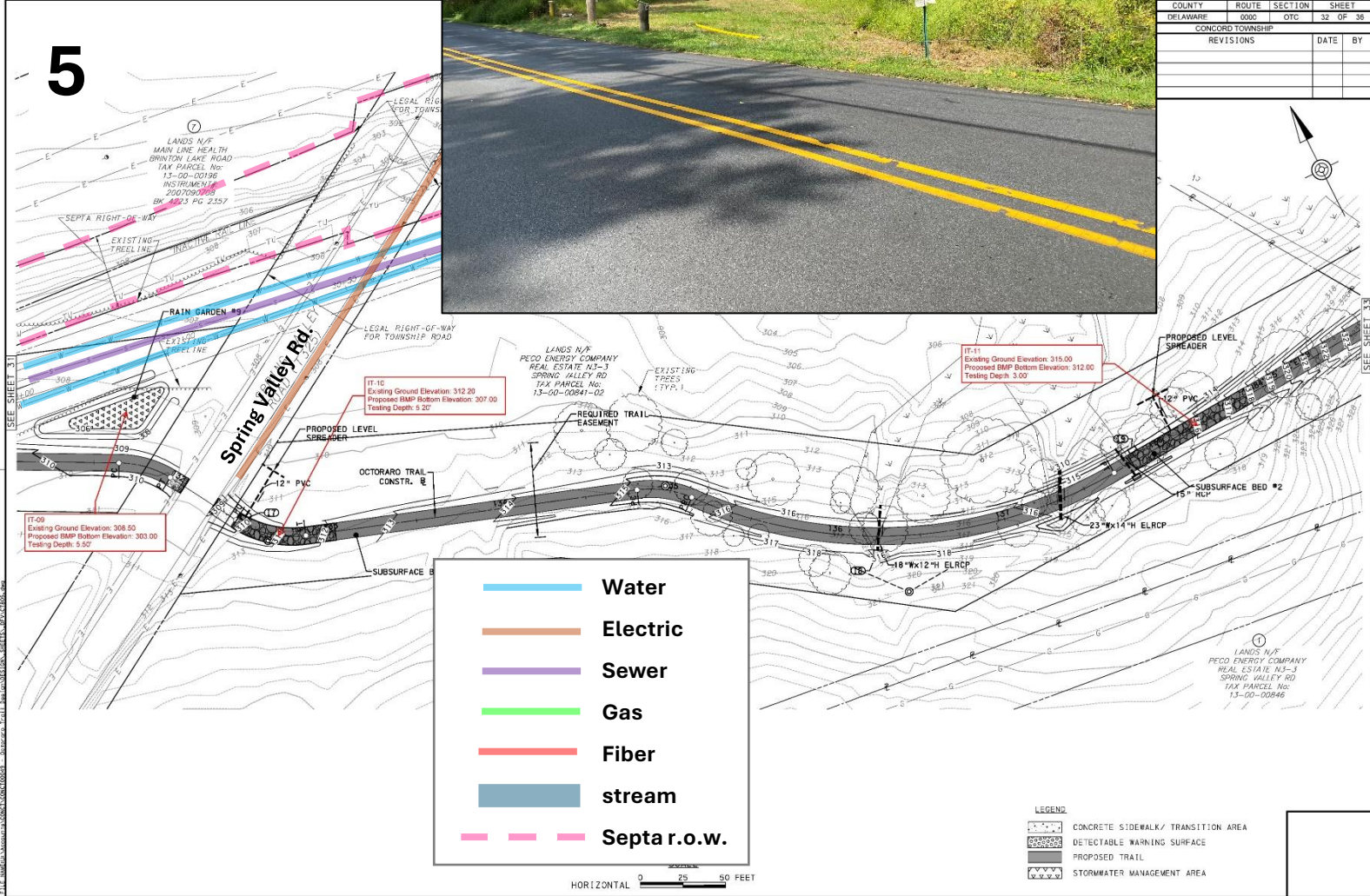
	CONCRETE SIDEWALK/ TRANSITION AREA
	DETECTABLE WARNING SURFACE
	PROPOSED TRAIL
	STORMWATER MANAGEMENT AREA

DATE: 10/15/2024
DRAWN BY: [Name]
CHECKED BY: [Name]
SCALE: AS SHOWN
PROJECT: [Name]

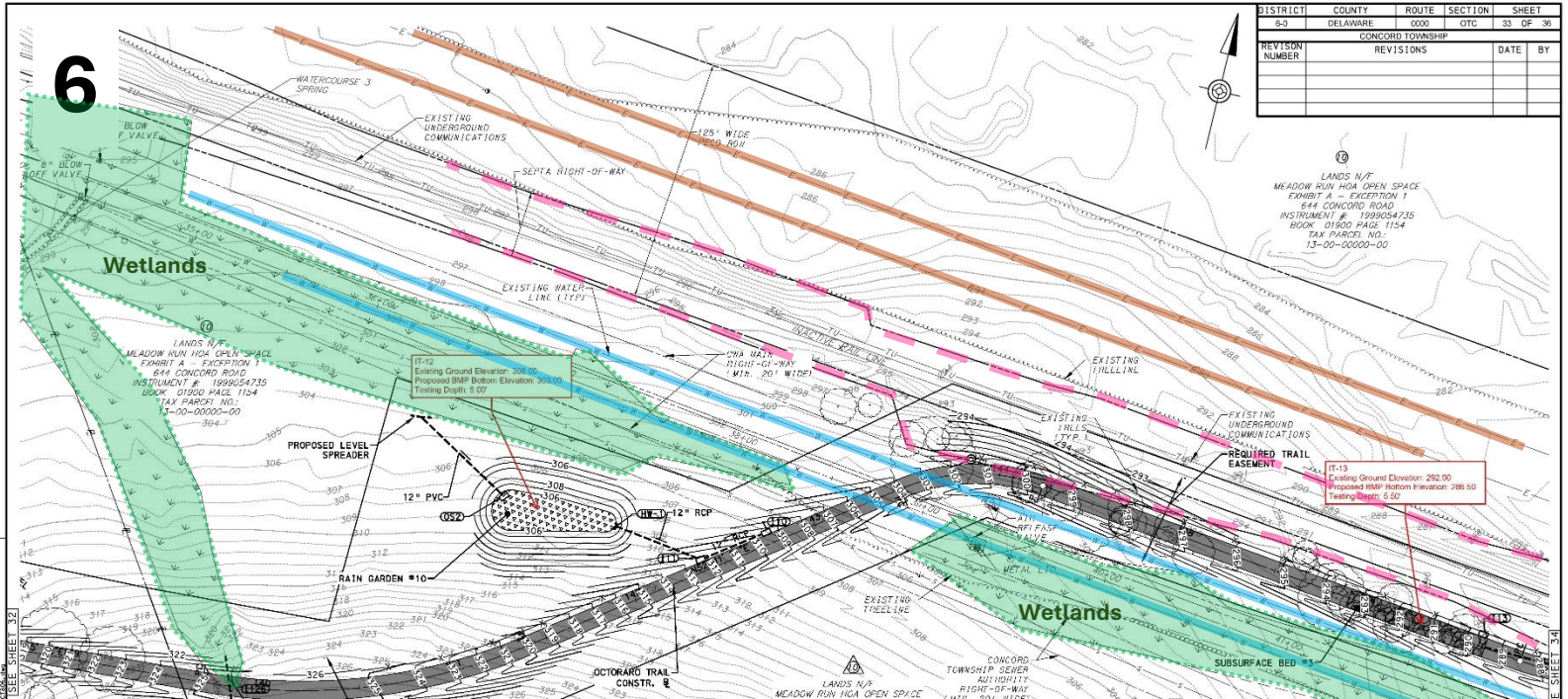
5










COUNTY	ROUTE	SECTION	SHEET
DELAWARE	0000	07C	32 OF 36
CONCORD TOWNSHIP			
REVISIONS	DATE	BY	



DISTRICT	COUNTY	ROUTE	SECTION	SHEET
6-0	DELAWARE	0000	0TC	33 OF 36
CONCORD TOWNSHIP				
REVISION NUMBER	REVISIONS	DATE	BY	



-  Water
-  Electric
-  Sewer
-  Gas
-  Fiber
-  stream
-  Septa r.o.w.

SCALE
0 25



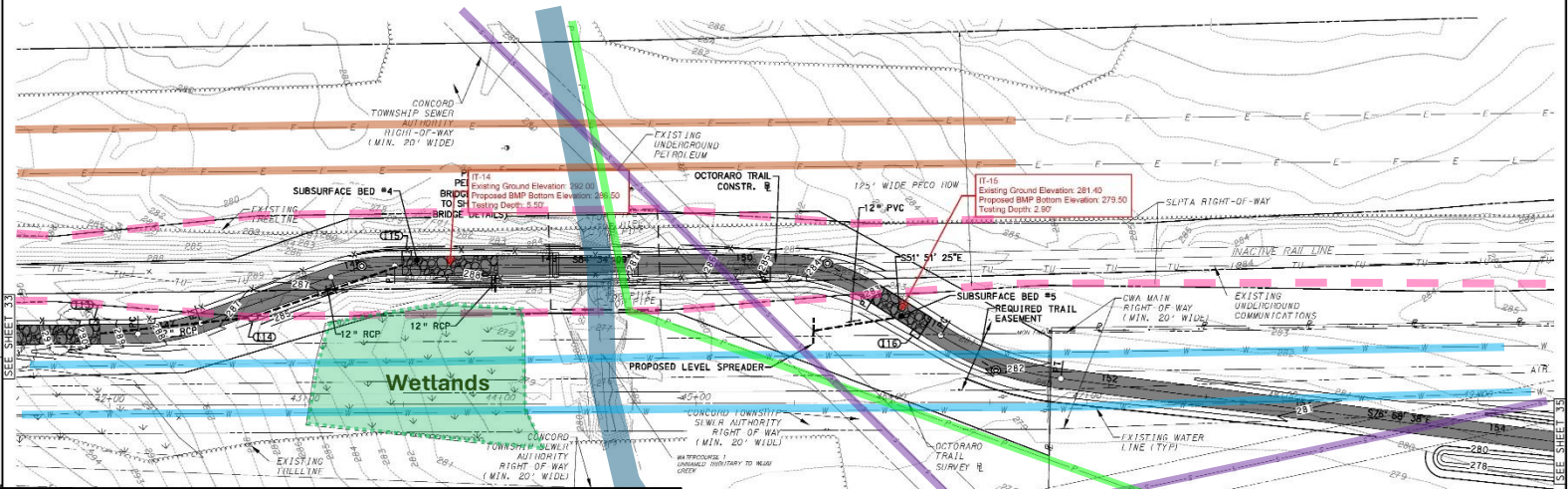
PERMANENT ASSOCIATES, INC.
 1000 W. HUNTERS BLVD., SUITE 100
 CONCORD, DE 19380
 PHONE: 302-336-1100
 FAX: 302-336-1101
 WWW.PAENGINEERS.COM








SEE SHEET 32

SEE SHEET 31

7

DISTRICT	COUNTY	ROUTE	SECTION	SHEET
6-D	DELAWARE	0000	DTC	24 OF 36
CONCORD TOWNSHIP				
REVISION NUMBER	REVISIONS	DATE	BY	



	Water
	Electric
	Sewer
	Gas
	Fiber
	stream
	Septa r.o.w.

SCALE
0 25 50 FEET

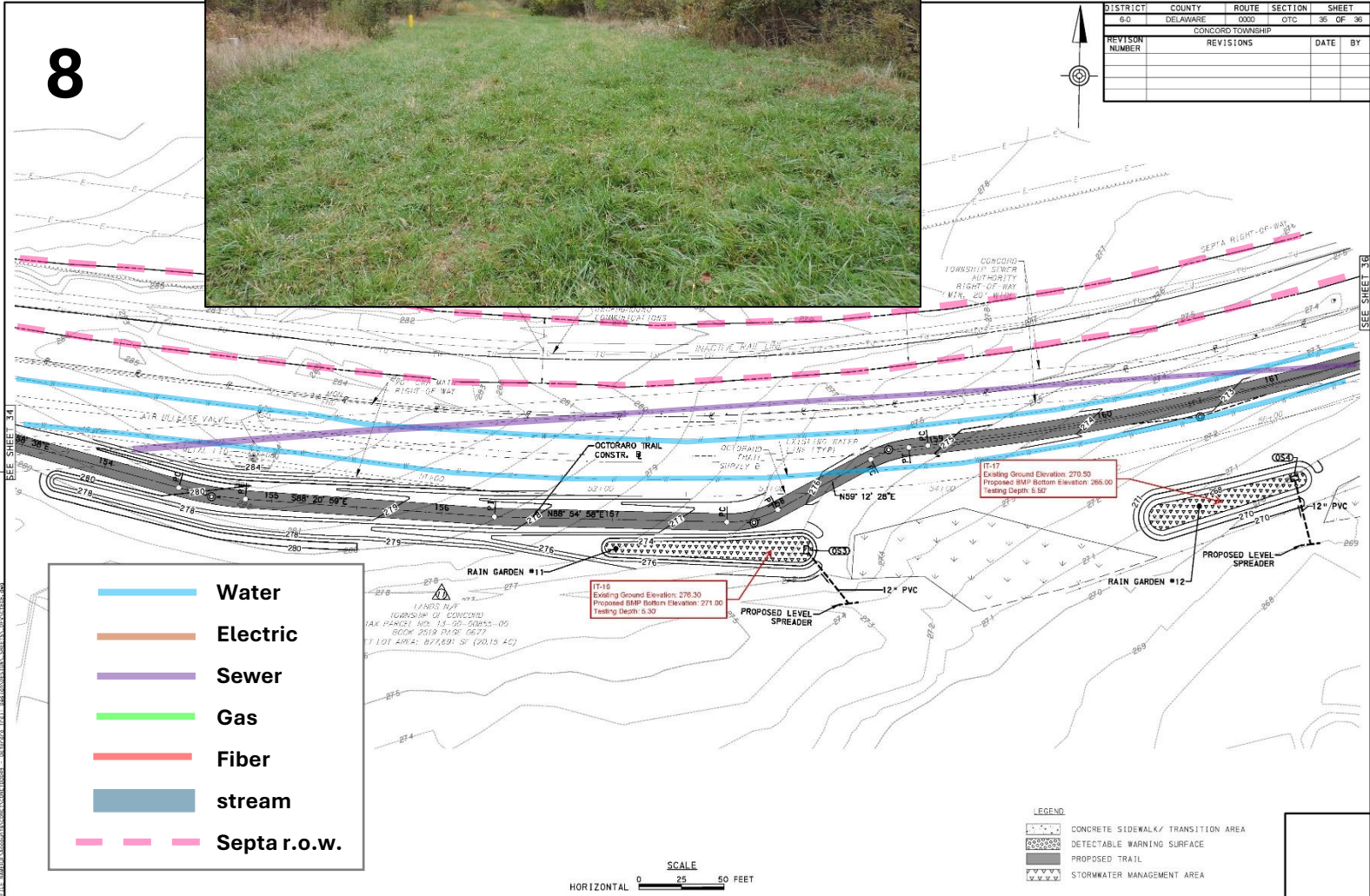
LANDS NOT
TOWNSHIP OF CONCORD
TAX PARCEL NO. 13-00-00855-00
CONCORD TOWNSHIP DEPT. OF PUBLIC WORKS
(2015 AC)

DEWALK/ TRANSITION AREA
WARNING SURFACE
WALK
MANAGEMENT AREA

8



DISTRICT	COUNTY	ROUTE	SECTION	SHEET
6D	DELAWARE	0000	07C	36 OF 36
CONCORD TOWNSHIP				
REVISION NUMBER	REVISIONS	DATE	BY	



	Water
	Electric
	Sewer
	Gas
	Fiber
	stream
	Septa r.o.w.

LEGEND

	CONCRETE SIDEWALK/ TRANSITION AREA
	DETECTABLE WARNING SURFACE
	PROPOSED TRAIL
	STORMWATER MANAGEMENT AREA








HORIZONTAL SCALE 0 25 50 FEET

PREPARED BY: JESSICA L. WALKER, P.E.
 CHECKED BY: JAMES H. HARRIS, P.E.
 DATE: 10/15/2019
 PROJECT: CONCORD TOWNSHIP SEWER AUTHORITY & RIGHT OF WAY WITH 20' MARGIN

9

DISTRICT	COUNTY	ROUTE	SECTION	SHEET
60	DELAWARE	000	07C	36 OF 36
CONCORD TOWNSHIP				
REVISION NUMBER	REVISIONS	DATE	BY	



	Water
	Electric
	Sewer
	Gas
	Fiber
	stream
	Septa r.o.w.

SCALE
HORIZONTAL 0 25 50 FEET



PREPARED BY: J. W. HARRIS, INC.
 1000 W. MARKET STREET, SUITE 100
 WILMINGTON, DE 19801
 TEL: 302.436.1234 FAX: 302.436.1235
 WWW.JWHARRIS.COM



Long Meadow Preserve

Context Plan

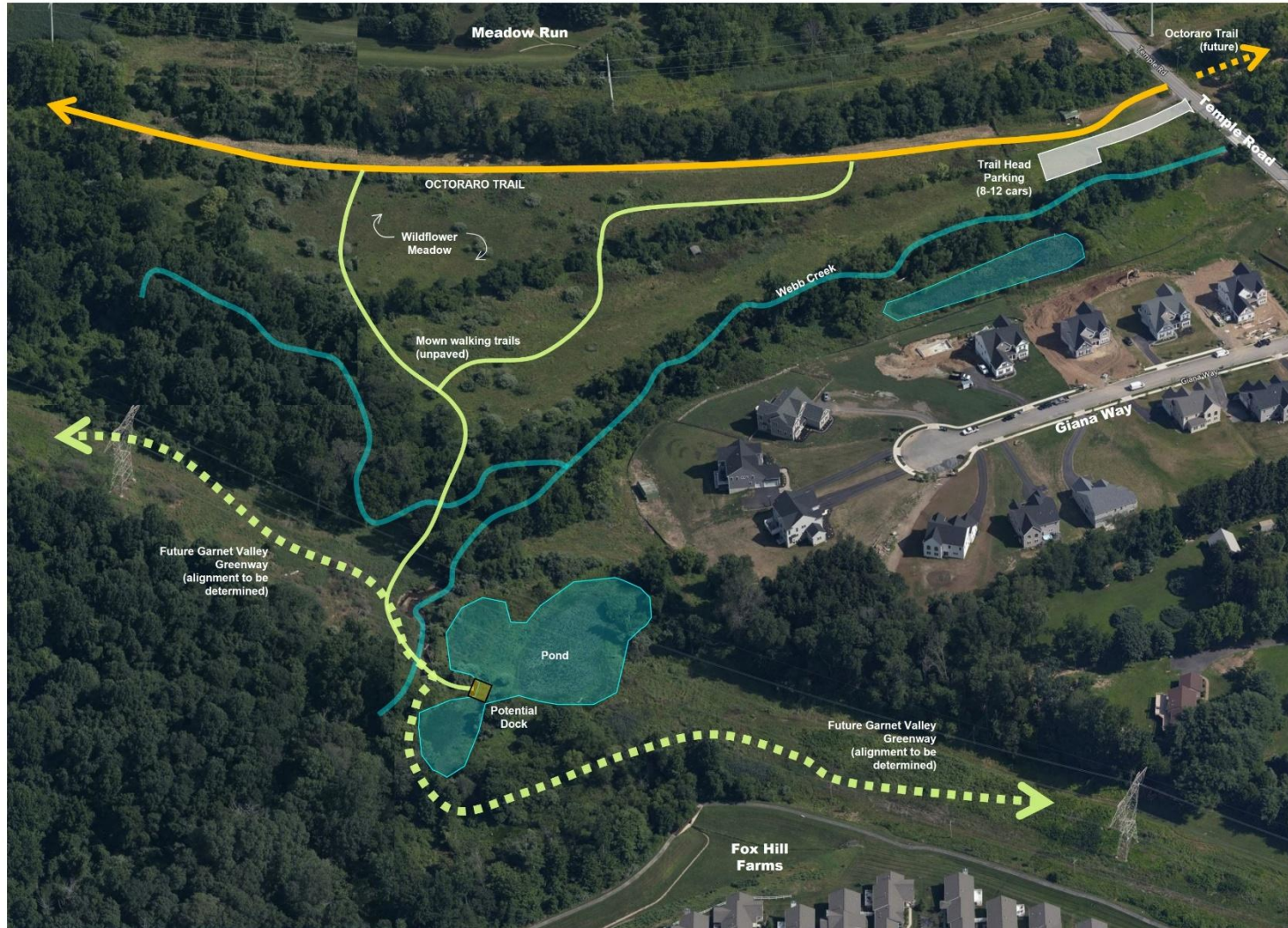
Concord Township



December 2023



Master Plan drawings prepared by Pennoni in 2023. Underlying base data prepared by Bohler Engineering in 2015.



Long Meadow Preserve

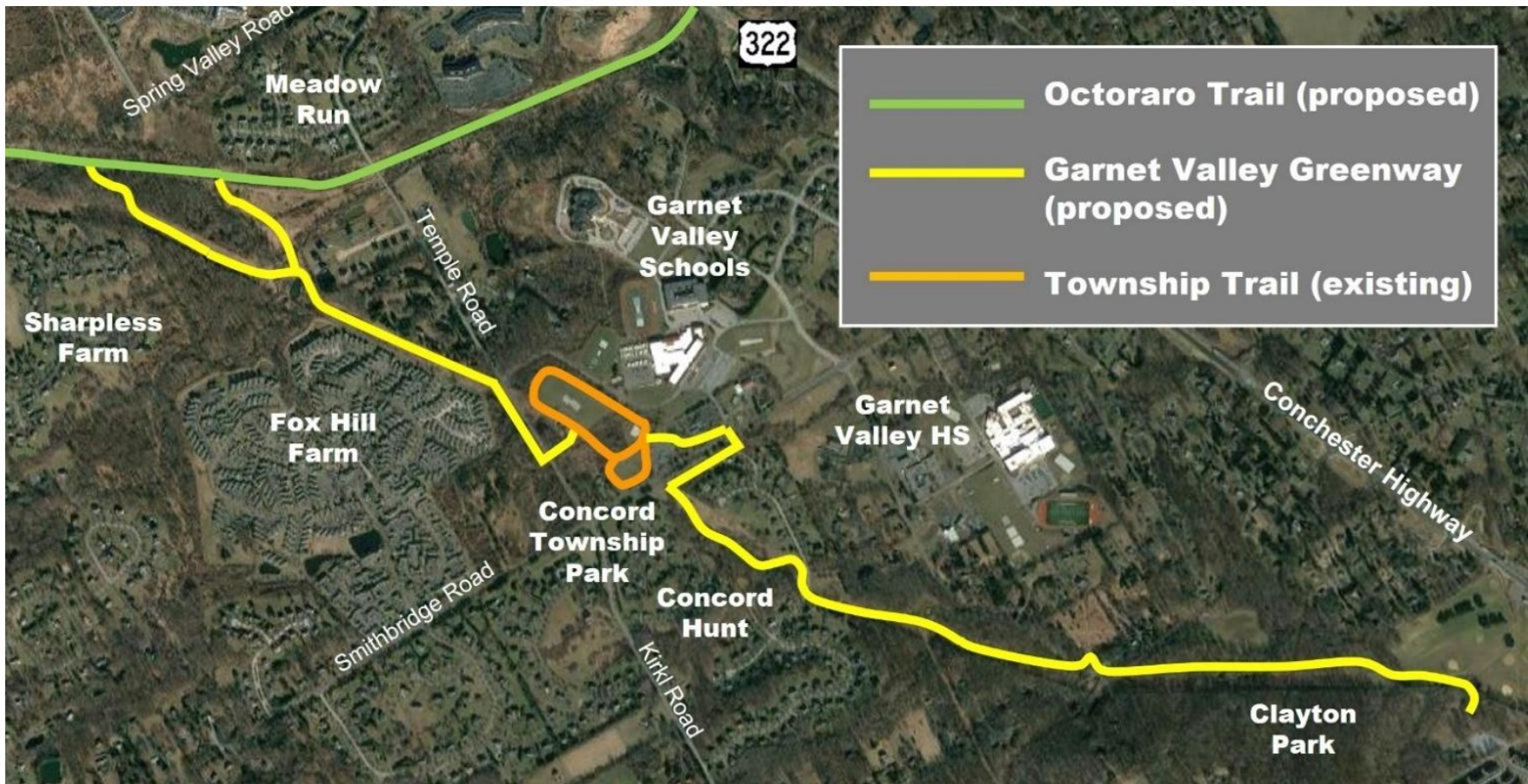
Bird's Eye View

Concord Township



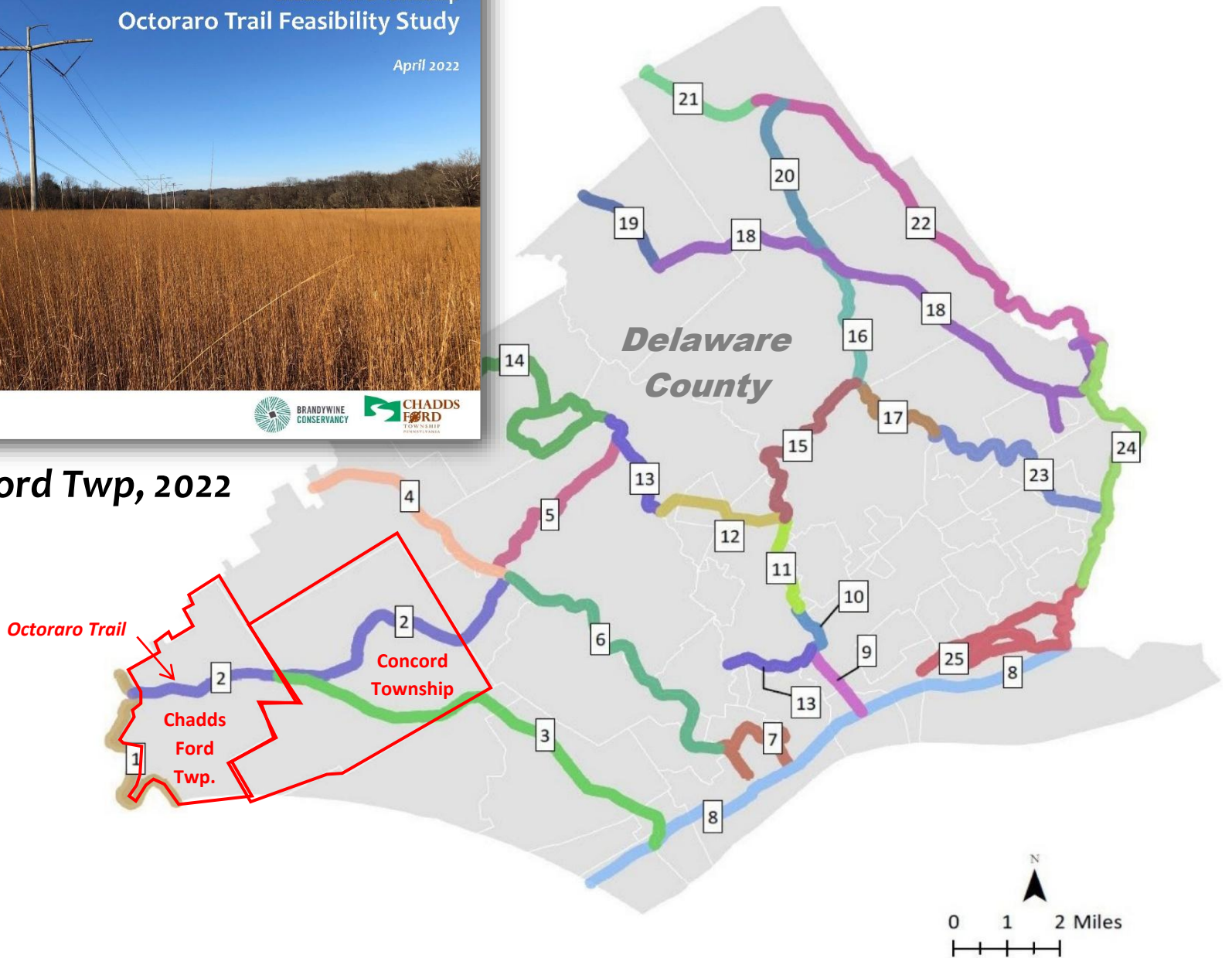
December 2023

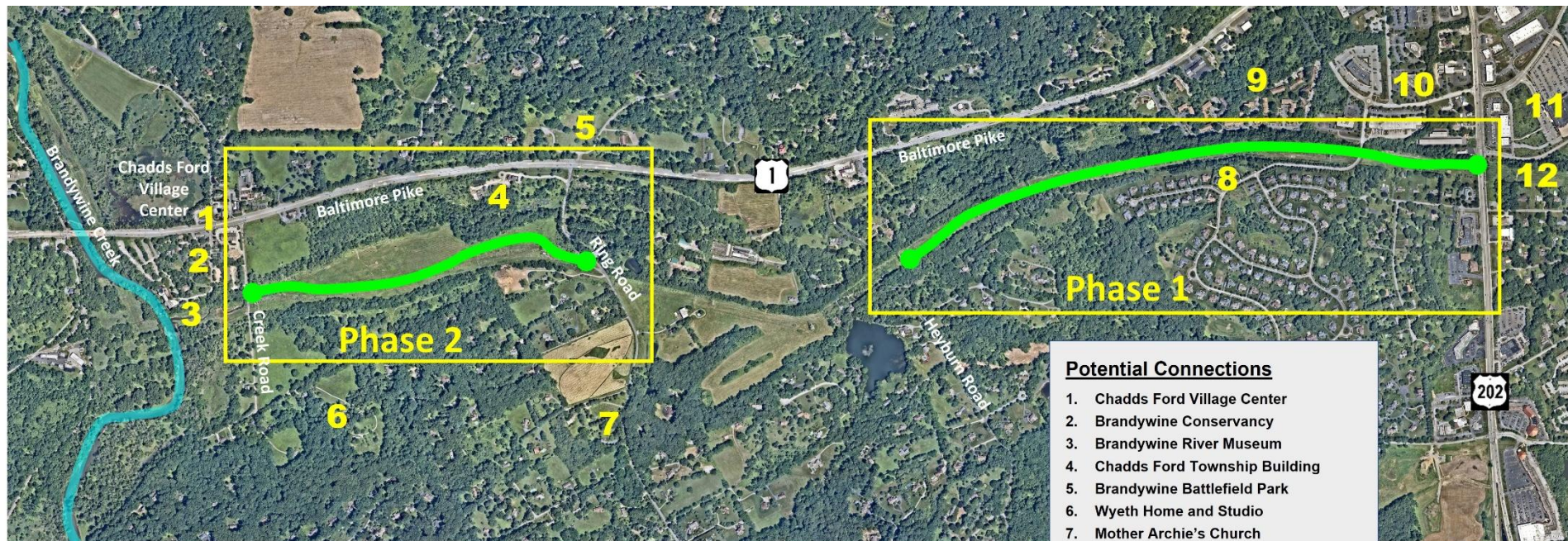






Chadds Ford Twp, 2022





Potential Connections

1. Chadds Ford Village Center
2. Brandywine Conservancy
3. Brandywine River Museum
4. Chadds Ford Township Building
5. Brandywine Battlefield Park
6. Wyeth Home and Studio
7. Mother Archie's Church
8. Estates at Chadds Ford neighborhood
9. Painter's Crossing Condominiums
10. Office Park
11. Brandywine Mills Shopping
12. Octoraro Trail (Concord Twp.)

Community Connections
Chadds Ford Twp, 2022



Phase 1 Concept



Phase 2 Concept





Coming 2026 !! (???)