

MIDDLETOWN TOWNSHIP TRAIL SYSTEM AND INITIATIVES

John McMullan
Township Manager

ABOUT US

When entering Middletown Township, many gateways have signs that read, “Middletown Township, Where all trails lead.” Aptly put for a Township which has approximately 35 miles of trail, approximately half of which are public and 16.5 miles privately-owned by Tyler Arboretum. There are a variety of public trail types in Middletown. These range from the paved regional, Circuit level, Chester Creek Trail, to the natural trails found on the large Linvill or Darlington open space tracts, to small paved paths like that found around the perimeters of Sleighton Park and the Longview Park.



	Trail Name	Distance (Miles)	Type	Ownership	Public Assess
1	Cornucopia Trail	1.25	Unpaved	Middletown Township	Yes
2	Darlington Trail	2.93	Unpaved	Middletown Township	Yes
3	Indian Orchards Trail	.83	Unpaved	Middletown Township	Yes
4	Linvill Trail	3.5	Unpaved	Middletown Township	Yes
5	Rocky Run Trail	2.5	Unpaved	Middletown Township	Yes
6	Starch Mill Trail	.11	Unpaved	Middletown Township	Yes
7	Sleighton Park Trail	.73	Paved	Middletown Township	Yes
8	Sleighton Farm Trail	.8	Mixed	Middletown Township	Yes
9	Mint Trail	1.0	Paved	Middletown Township	Yes
10	Longview Park Trail	1.1	Paved	Middletown Township	Yes
11	Millenium Trail	.5	Unpaved	Middletown Township	Yes
12	Printer's Way Path	.2	Paved	Middletown Township	Yes
13	Lenni Trail	TBD	Paved	Middletown Township	Yes
14	Chester Creek Trail	2.5	Paved	Delaware County	Yes
15	Tyler Arboretum Trail	16.5	Mixed	Tyler Arboretum	No
	TOTAL MILES	>34.45			

MIDDLETOWN
TOWNSHIP
OWNED/MAIN
TAINED TRAILS



CORNUCOPIA TRAIL

Type: Unpaved, earthen

Established: 1999

Length: 1.25 miles

Facilities:

Orange Trail Markers

Benches



DARLINGTON TRAIL

Type: Unpaved, earthen

Established: 1981

Length: 2.93 miles

Facilities:

Parking

White Trail Markers

Benches



INDIAN ORCHARD TRAIL

Type: Unpaved, earthen

Established: 1981

Length: .83 miles

Facilities:

Orange Trail Markers

Parking

Story Trail



ROCKY RUN TRAIL

Type: Unpaved, earthen

Established: 1988

Length: 2.5 miles

Facilities:

White Trail Markers

Parking



LINVILL TRAIL

Type: Unpaved, earthen

Established: 1989

Length: 3.5 miles

Facilities:

White Trail Markers



SLEIGHTON PARK TRAIL

Type: Paved, circuit

Established: 2010

Length: .73 miles

Facilities:

Benches

Pavilion with Bathrooms

Gaga Pit

Parking



LONGVIEW PARK TRAIL

Type: Paved, circuit

Established: 2021

Length: 1.1 miles

Facilities:

Parking

Resting Rocks



MILLENIUM TRAIL

Type: Unpaved

Established: 1999

Length: .5 miles

Facilities:

Benches

Parking



SLEIGHTON FARMS TRAIL

Type: Paved and Unpaved

Established: 2023

Length: 1.1 miles

Facilities:

Parking



MINT TRAIL (phase 1)

Type: Paved

Established: 2024

Length: 1.0 miles

The National Recreation and Park Association (NRPA) published a *2021 NRPA Performance Agency Review* reporting that, on average, a typical park and recreation agency manages and maintains 12 miles of trails in their network for hiking, biking, and walking. Furthermore, communities with populations less than 20,000 typically have a network of three miles of trail. In comparison, Middletown Township, with a population estimate of 15,969 in 2020, owns and/or maintains over 16 miles of trails with an additional 3.3 miles of trail planned to be constructed within a few short years



PROPOSED NEW TRAILS

Chester Creek Trail Extension

- Paved/Asphalt
- 0.62 miles

Lenni Trail

- Paved/
Asphalt
- 0.75 miles



PHASE I – MINT TRAIL |



Photo 1: Cleared trail showing crushed stone, looking Northeast toward access from Switchman Road.

Photo 2: Cleared trail approximately 30 yards from access to Switchman road.



PHASE 1 – MINT TRAIL

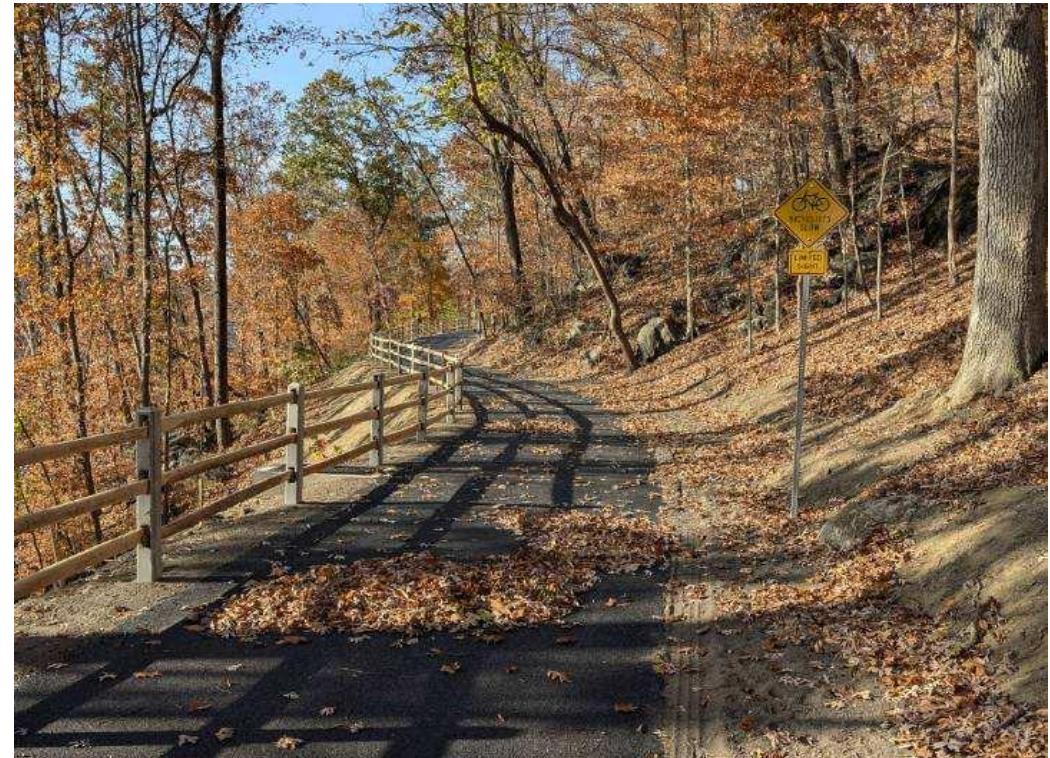
PHASE 1 – MINT TRAIL

Trail with sub-base



20XX

Trail with porous finished paving



PITCH DECK 11

PHASE I – MINT TRAIL VIEW OF WAWA SEPTA STATION



20XX



PITCH DECK

12

THE FUTURE



A key recommendation from the 2020 Middletown Comprehensive Plan was to identify and prioritize new pedestrian connections. Our new initiative, called Link Middletown, connects the entire Township through a Pedestrian Network. It incorporates existing and proposed sidewalks along with Primary and Secondary destinations within the Township to reflect a more comprehensive Pedestrian Network.

Primary Destinations



Township Parks



Roosevelt Community Center



Train Stations



Williamson and Penn State



Commercial Center



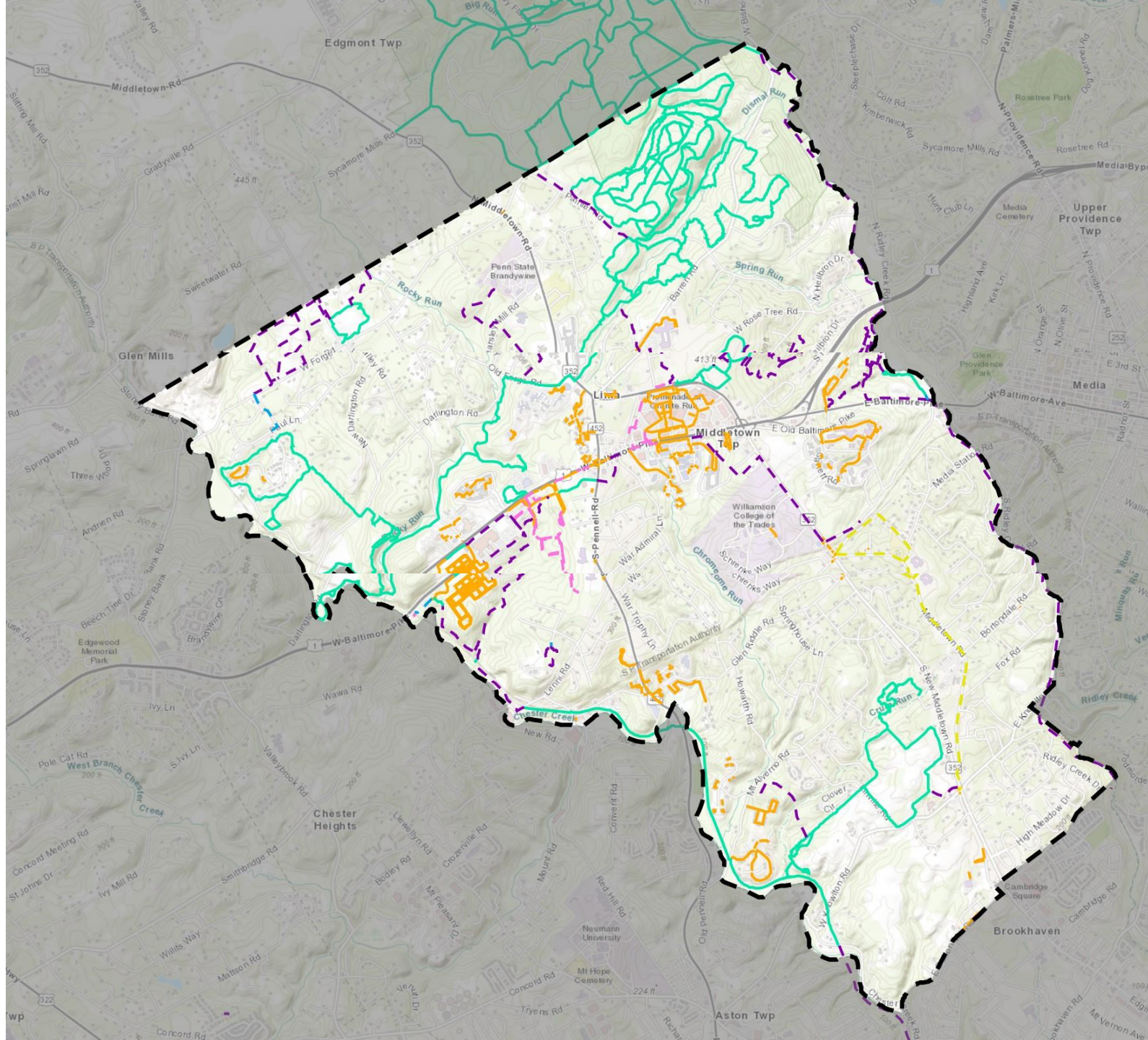
Schools



Tyler Arboretum and Ridley Creek State Park



Hospital



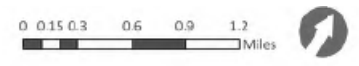
Legend

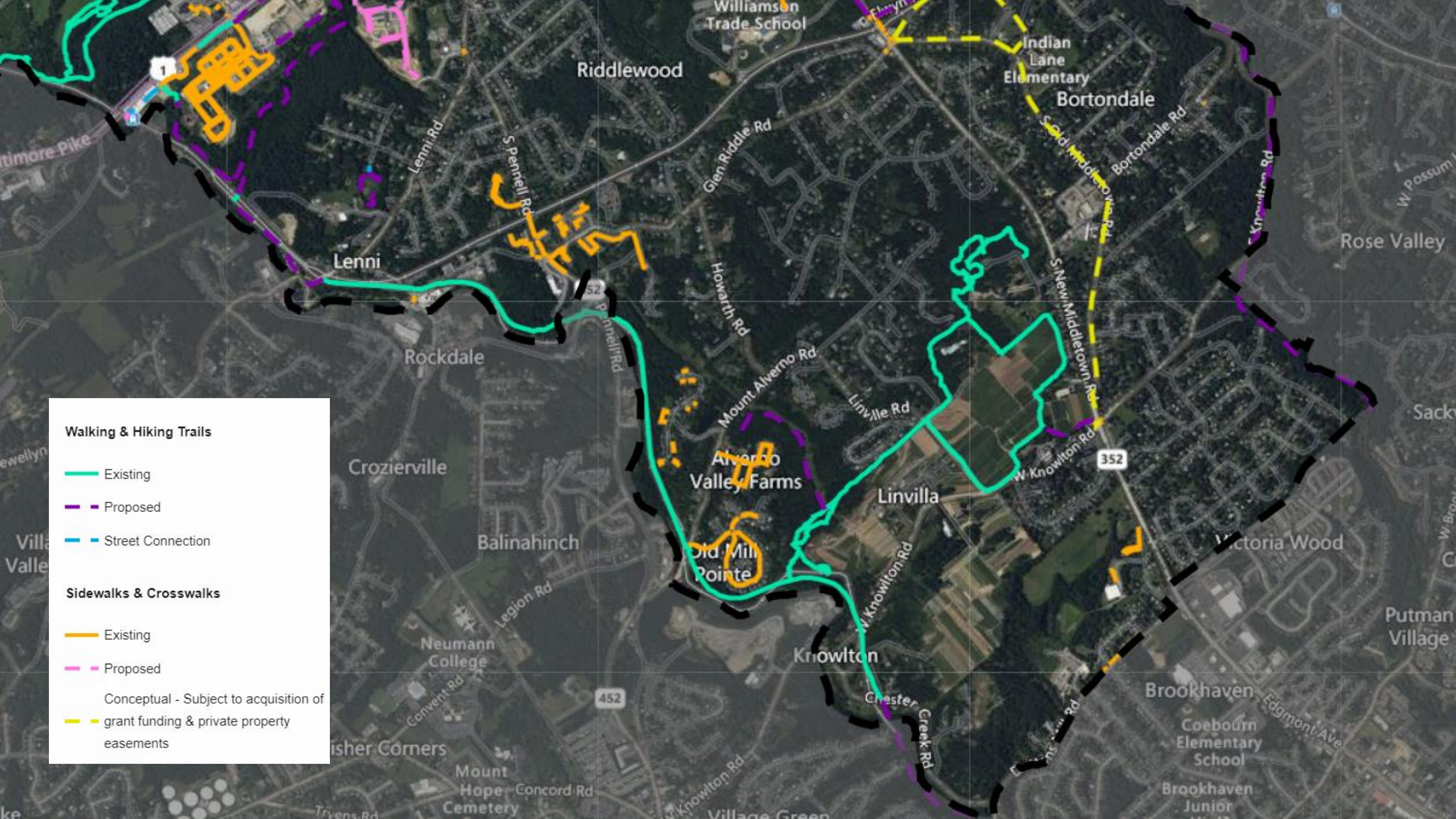
Walking & Hiking Trails

- Existing
- - - Proposed
- Street Connection

Sidewalks & Crosswalks

- Existing
- - - Proposed
- - - Conceptual - Subject to acquisition of grant funding & private property easements





Walking & Hiking Trails

- Existing
- Proposed
- Street Connection

Sidewalks & Crosswalks

- Existing
- Proposed
- Conceptual - Subject to acquisition of grant funding & private property easements



Q&A